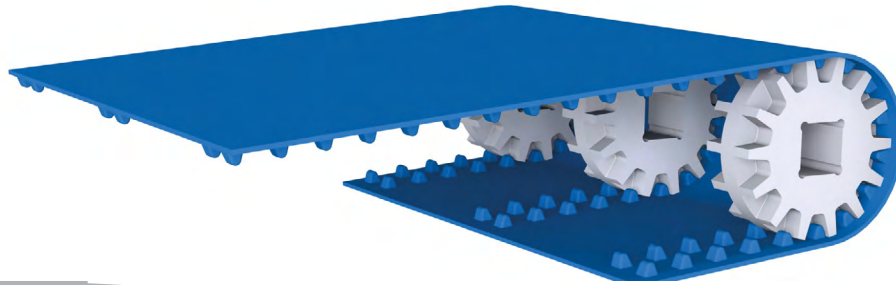


POSITIVEBELT®

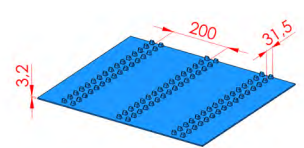
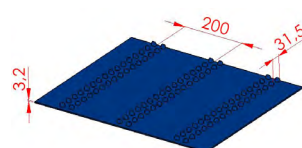
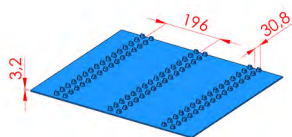


«SELF-TRACKING POSITIVE DRIVE BELT»



POSITIVEBELT® P02

Reference	PO331LB2	PO331LW2	PO331RLB2	PO331LB2AM	PO331LB2H
Material	Polyurethane	Polyurethane	Polyurethane reinforced aramid ropes	Antimicrobial polyurethane	Polyester elastomer
Colour	Blue	White	Blue	Dark blue	Blue
Food	CE / FDA	CE / FDA	CE / FDA	CE	CE / FDA
Top surface	Smooth	Smooth	Smooth	Smooth	Smooth
Hardness	95 ShA	95 ShA	95 ShA	95 ShA	55 ShD
Aramid cable reinforcement	no	no	yes	no	no
Pitch +/- 0.3 (mm)	31.5	31.5	31,5	31.5	30.8
Thickness (mm)	3.2	3.2	3,2	3.2	3.2
Distance between rows of teeth (mm)	200	200	200	200	196
Max. width (mm)	1 000	1 000	1 000	1 000	1 000
Weights	4.8 kg/m ²	4.8 kg/m ²	5 kg/m ²	4.8 kg/m ²	4.4 kg/m ²
Min. pulley diameter (mm)	100	100	100	100	120
Min. pulley diameter - back flex (mm)	100	100	100	100	120
Temperature range	-20°C / +75°C	-20°C / +75°C	-20°C / +75°C	-20°C / +75°C	-20°C / +80°C
Traction force for a width of 100 mm	70 daN at 3% elongation	70 daN at 3% elongation	120daN at 2.5% elongation	70 daN at 3% elongation	165 daN at 2.5% elongation
Friction coefficient					
On HDPE bed	0.35	0.35	0,35	0.35	0.15
On stainless steel bed	0.6	0.6	0,6	0.6	0.45





POSITIVEBELT®

The positive drive thermo-weldable POSITIVEBELT® P02 offers **exceptional guidance thanks to the dual row of teeth**.

The **perfectly smooth top side** makes it easy to clean and maintains an **optimal level of hygiene**.

The belt is guided within the gaps of the conveyor support rails. The belt tolerates side loads without the risk of tracking off.



The belt is driven by sprockets mounted on a square shaft or a drum motor.

The POSITIVEBELT® P02 belt is mounted **without tension**, thus reducing the stress on the mechanical parts of the conveyor: shafts, bearings, etc.

An open, cantilevered conveyor design is possible due to the absence of belt tension, making it easier to remove and re-fit the belt when it is regularly used.

The belt can be equipped with **cleats** or **sidewalls**.

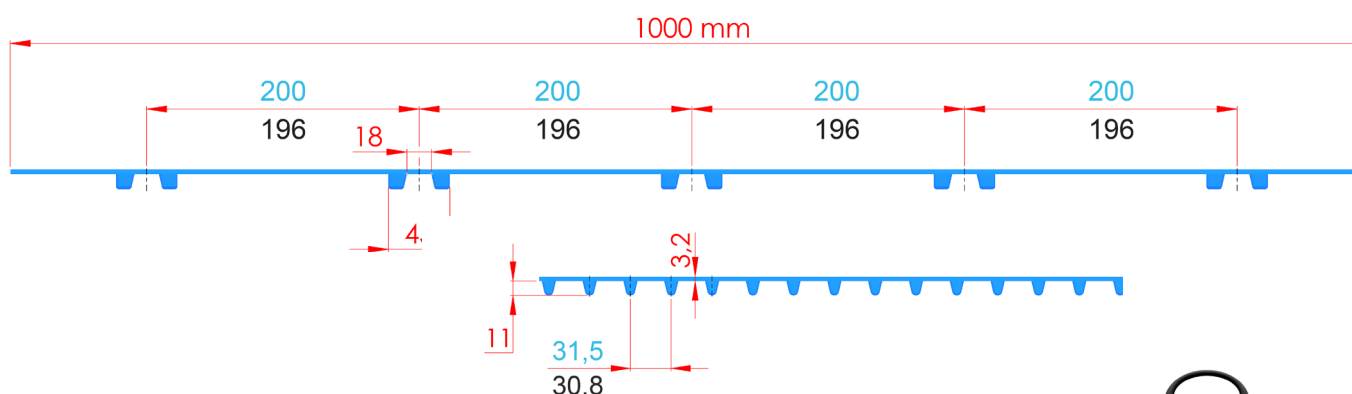
The POSITIVEBELT® P02 belt can be trough-shaped.

POSITIVEBELT® P0331LB2AM is available with an **antimicrobial treatment** in the mass. This treatment inhibits the growth of bacteria and prevents contamination of the products being transported. It also improves food safety, reduces the development of odours and facilitates the cleaning of conveyor belts.

POSITIVEBELT® P0331LB2 is an aramid cord reinforced version which limits the elongation.

The POSITIVEBELT® P0331LB2H polyester elastomer belt is recommended for medium to heavy duty conveying and can be used on large centre distances. Its high tensile strength and low coefficient of friction allow, in certain cases, the use with accumulation of the transported products. It can accept higher peak temperatures, depending on the loads carried.

POSITIVEBELT Polyurethane
POSITIVEBELT Polyester elastomer





SPROCKETS, WHEELS AND DISKS FOR BELTS P0331LB2 AND P0331LB2AM

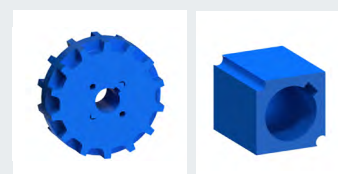


REFERENCE	PRODUCT	MATERIAL	COLOUR	OUTER DIAMETER (mm)	NUMBER OF TEETH	SQUARE BORE (mm)	WIDTH (mm)
P31BUN10C40	Sprocket	HDPE	Blue	100	10	40	50
R31BUN10C40	Wheel				-		
D31BUN10C40	Disk				-		
P31BUN12C40	Sprocket	HDPE	Blue	120	12	40	50
R31BUN12C40	Wheel				-		
D31BUN12C40	Disk				-		
P31BUN14C40	Sprocket	HDPE	Blue	142	14	40	50
R31BUN14C40	Wheel				-		
D31BUN14C40	Disk				-		
P31BUN16C40	Sprocket	HDPE	Blue	162	16	40	50
R31BUN16C40	Wheel				-		
D31BUN16C40	Disk				-		
P31BUN20C40	Sprocket	HDPE	Blue	202	20	40	50
R31BUN20C40	Wheel				-		
D31BUN20C40	Disk				-		

Sprockets, wheels and disks with 1.5" square bore on request

The standard sprockets we offer have a square bore for a 40x40 mm drive shaft.

They can be mounted on other shafts with special adapters.
Please enquire for any other dimensions of round or square shaft.



SPROCKETS FOR DRIVING DRUM

HDPE sprockets on stainless steel ring, locked with set screw.



REFERENCE	PRODUCT	MATERIAL	COLOUR	OUTER DIAMETER (mm)	NUMBER OF TEETH	DRIVING DRUM	WIDTH (mm)
P31BUN15R122	Sprocket	HDPE	Blue	152	15	113i DM0113	50
R31BUN15R122	Wheel	HDPE	Blue	152	-	113i DM0113	50
P31BUN18R147	Sprocket	HDPE	Blue	182	18	138i DM0138	50
R31BUN18R147	Wheel	HDPE	Blue	182	-	138i DM0138	50
P31BUN20R174	Sprocket	HDPE	Blue	202	20	165i DM0165	50
R31BUN20R174	Wheel	HDPE	Blue	202	-	165i DM0165	50



SPROCKETS, WHEELS AND DISKS FOR BELTS P0331LB2H

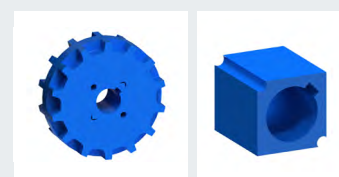


REFERENCE	PRODUCT	MATERIAL	COLOUR	OUTER DIAMETER (mm)	NUMBER OF TEETH	SQUARE BORE (mm)	WIDTH (mm)
P30BUN14C40	Sprocket	HDPE	Blue	137	14	40	50
R30BUN14C40	Wheel				-		
D30BUN14C40	Disk				-		
P30BUN16C40	Sprocket	HDPE	Blue	157	16	40	50
R30BUN16C40	Wheel				-		
D30BUN16C40	Disk				-		
P30BUN20C40	Sprocket	HDPE	Blue	197	20	40	50
R30BUN20C40	Wheel				-		
D30BUN20C40	Disk				-		

Sprockets, wheels and disks with 1.5" square bore on request

The standard sprockets we offer have a square bore for a 40x40 mm drive shaft.

They can be mounted on other shafts with special adapters.
Please enquire for any other dimensions of round or square shaft.

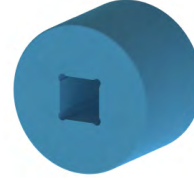


SPROCKETS FOR DRIVING DRUM

HDPE sprockets on stainless steel ring, locked with set screw.



REFERENCE	PRODUCT	MATERIAL	COLOUR	OUTER DIAMETER (mm)	NUMBER OF TEETH	DRIVING DRUM		WIDTH (mm)
P30BUN15R122	Sprocket	HDPE	Blue	147	15	113i	DM0113	50
R30BUN15R122	Wheel	HDPE	Blue		-	113i	DM0113	50
P30BUN18R147	Sprocket	HDPE	Blue	177	18	138i	DM0138	50
R30BUN18R147	Wheel	HDPE	Blue		-	138i	DM0138	50
P30BUN20R174	Sprocket	HDPE	Blue	197	20	165i	DM0165	50
R30BUN20R174	Wheel	HDPE	Blue		-	165i	DM0165	50



WIDE SPROCKETS AND WHEELS FOR BELTS P0331LB2 AND P0331LB2AM

REFERENCE	PRODUCT	MATERIAL	COLOUR	OUTER DIAMETER (mm)	NUMBER OF TEETH	SQUARE BORE (mm)	WIDTH (mm)
P31LBUN10C40	Sprocket	HDPE	Blue	100	10	40	100
R31LBUN10C40	Wheel				-		
P31LBUN12C40	Sprocket	HDPE	Blue	120	12	40	100
R31LBUN12C40	Wheel				-		
P31LBUN14C40	Sprocket	HDPE	Blue	142	14	40	100
R31LBUN14C40	Wheel				-		
P31LBUN16C40	Sprocket	HDPE	Blue	162	16	40	100
R31LBUN16C40	Wheel				-		
P31LBUN20C40	Sprocket	HDPE	Blue	202	20	40	100
R31LBUN20C40	Wheel				-		

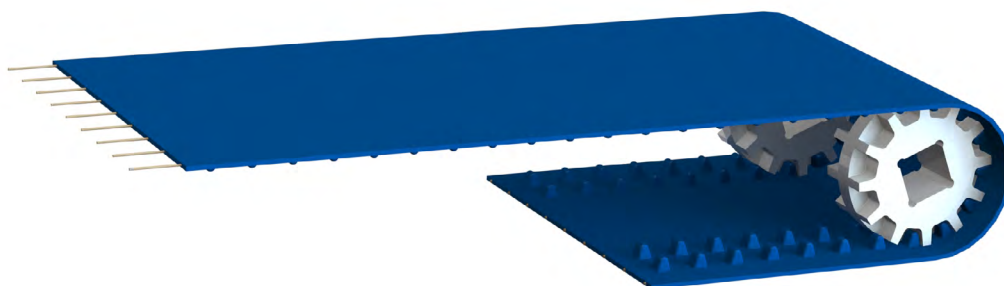
WIDE SPROCKETS AND WHEELS FOR BELTS P0331LB2H

REFERENCE	PRODUCT	MATERIAL	COLOUR	OUTER DIAMETER (mm)	NUMBER OF TEETH	SQUARE BORE (mm)	WIDTH (mm)
P30LBUN14C40	Sprocket	HDPE	Blue	137	14	40	100
R30LBUN14C40	Wheel				-		
P30LBUN16C40	Sprocket	HDPE	Blue	157	16	40	100
R30LBUN16C40	Wheel				-		
P30LBUN20C40	Sprocket	HDPE	Blue	197	20	40	100
R30LBUN20C40	Wheel				-		

Sprockets, wheels and disks with 1.5" square bore on request

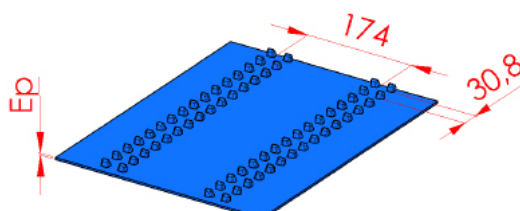


POSITIVEBELT® P01 Reinforced



POSITIVEBELT® P01

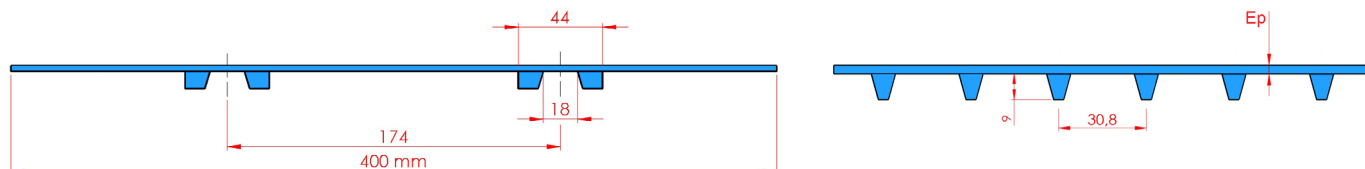
Reference	PO131LB	PO231RLB	PO231RLBPI	PO331RLB	PO331RLBPI
Material	Polyurethane	Polyurethane		Polyurethane	
Colour	Blue	Blue		Blue	
Food	CE / FDA	CE / FDA		CE / FDA	
Top surface	Smooth	Smooth	Spikes	Smooth	Spikes
Hardness	90 ShA	92 ShA		95 ShA	
Aramid cable reinforcement	no	yes		yes	
Pitch (mm)	30,8	30,8		30,8	
Thickness (mm)	2	3	4	3,5	4
Distance between rows of teeth (mm)	174	174		174	
Max width(mm)	400	400		400	
Weights (kg/m ²)	3,2	4,7		5,5	
Min. pulley diameter (mm)	50	75		105	
Min. pulley diameter - back flex (mm)	50	75		105	
Temperature range	-25°C / +60°C	-25°C / +70°C		-20°C / +80°C	
Traction force at 2% elongation	15 daN	120 daN		200 daN	
Friction coefficient					
On HDPE bed	0,4	0,35		0,3	
On stainless steel bed	0,7	0,6		0,5	



POSITIVEBELT® P01 Reinforced



POSITIVEBELT® P01 is a reinforced version with aramid cords (except P0131LB). It is particularly suitable for applications requiring **good adhesion** or **small pulley diameters**. The distributed reinforcement allows **a high load capacity**, even on small widths. It is possible to add cleats or sidewalls. Top side with spikes on request.



SPROCKETS, WHEELS ET DISKS FOR BELTS P01

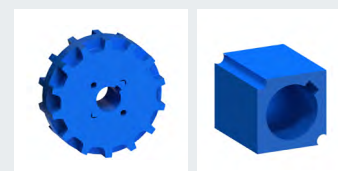


REFERENCE	PRODUCT	MATERIAL	COLOUR	OUTER DIAMETER (mm)	NUMBER OF TEETH	SQUARE BORE (mm)	WIDTH (mm)
P30BUN10C40	Sprocket	HDPE	Blue	97	10	40	50
R30BUN10C40	Wheel				-		
D30BUN10C40	Disk				-		
P30BUN12C40	Sprocket	HDPE	Blue	117	12	40	50
R30BUN12C40	Wheel				-		
D30BUN12C40	Disk				-		
P30BUN14C40	Sprocket	HDPE	Blue	137	14	40	50
R30BUN14C40	Wheel				-		
D30BUN14C40	Disk				-		
P30BUN16C40	Sprocket	HDPE	Blue	157	16	40	50
R30BUN16C40	Wheel				-		
D30BUN16C40	Disk				-		
P30BUN20C40	Sprocket	HDPE	Blue	197	20	40	50
R30BUN20C40	Wheel				-		
D30BUN20C40	Disk				-		

Sprockets, wheels and disks with 1.5" square bore on request

The standard sprockets we offer have a square bore for a 40x40 mm drive shaft.

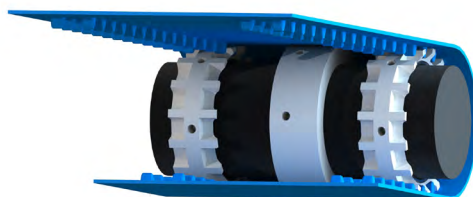
They can be mounted on other shafts with special adapters.
Please enquire for any other dimensions of round or square shaft.





POSITIVEBELT® P01 Reinforced

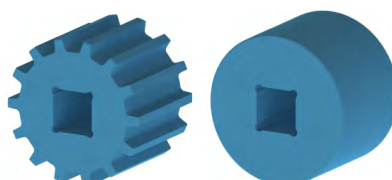
SPROCKETS AND WHEELS ON DRIVING DRUM FOR BELTS P01



HDPE sprockets to be mounted on stainless steel ring, locked with pressure screw.

REFERENCE	PRODUCT	MATERIAL	COLOUR	OUTER DIAMETER (mm)	NUMBER OF TEETH	DRIVING DRUM		WIDTH (mm)
P30BUN15R122	Sprocket	HDPE	Blue	147	15	113i	DM0113	50
R30BUN15R122	Wheel	HDPE	Blue		-	113i	DM0113	50
P30BUN18R147	Sprocket	HDPE	Blue	177	18	138i	DM0138	50
R30BUN18R147	Wheel	HDPE	Blue		-	138i	DM0138	50
P30BUN20R174	Sprocket	HDPE	Blue	197	20	165i	DM0165	50
R30BUN20R174	Wheel	HDPE	Blue		-	165i	DM0165	50

WIDE SPROCKETS AND WHEELS FOR BELTS P01



REFERENCE	PRODUCT	MATERIAL	COLOUR	OUTER DIAMETER (mm)	NUMBER OF TEETH	SQUARE BORE (mm)	WIDTH (mm)
P30LBUN10C40	Sprocket	HDPE	Blue	97	10	40	100
R30LBUN10C40	Wheel				-		
P30LBUN12C40	Sprocket	HDPE	Blue	117	12	40	100
R30LBUN12C40	Wheel				-		
P30LBUN14C40	Sprocket	HDPE	Blue	137	14	40	100
R30LBUN14C40	Wheel				-		
P30LBUN16C40	Sprocket	HDPE	Blue	157	16	40	100
R30LBUN16C40	Wheel				-		
P30LBUN20C40	Sprocket	HDPE	Blue	197	20	40	100
R30LBUN20C40	Wheel				-		

Sprockets and wheels with 1.5" square bore on request