

TRAPEZOIDAL PROFILES





TRAPEZOIDAL PROFILES

			L x h in mm										
			6 x 4 (Y)	8 x 5 (M)	10 x 6 (Z)	13 x 8 (A)	17 x 11 (B)	22 x 14 (C)	32 x 19 (D)	13 x 15 (A)	17 x 20 (B)	22 x 25 (C)	
Reinforced	DEL/SAN Reinforced Aramid	95 ShA											
	H15 / H16 Reinforced Aramid	92 ShA											
	SOUPLEX	85 ShA											
	POLYBELT+	85-70 ShA 95-70 ShA											
Standard	DEL/ROC	100 ShA 55 ShD											
	DEL/ROC	100 ShA 55 ShD											
	DEL/FLEX	90 ShA											
	DEL/FLEX	90 ShA											
	DEL/FLEX Metal detectable	90 ShA											
	SOUPLEX	85 ShA											
	SOUPLEX	80 ShA											
	SUPERFLEX	70 ShA											
A crest	TOPGRIP	DEL/SAN Reinforced Aramid	95 ShA										
		H15 / H16 Reinforced Aramid	92 ShA										
		SOUPLEX Reinforced Aramid	85 ShA										
	Standard	DEL/FLEX	90 ShA										
		SOUPLEX	92 ShA										
		DEL/FLEX	92 ShA										
		SOUPLEX	85 ShA										

* Mafdel recommends that products intended for use are first tested in your environment to validate compliance with the desired detection level.



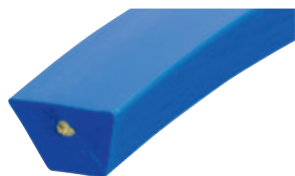
COGGING (Notching): All trapezoidal profiles can be 'cogged' (notched) from a 10x6mm section upwards. The cogging allows the belt to negotiate smaller pulleys.



COATINGS: Coatings are available from a 10x6mm section upwards. A wide range of smooth or structured coatings, in PU, PVC, felt or rubber is available. See page 33.



REINFORCED TRAPEZOIDAL PROFILES



DEL/SAN
blue reinforced Aramid



Reference	Traction strength (daN)	pulley Ø (mm)		Section	Tension	Reference	Traction strength (daN)	pulley Ø (mm)	
		Advised	Minimum					Advised	Minimum
DSVBAR13	35	150	130	13x8 (A)	1%	DSVBAC13	35	120	100
DSVBAR17	60	180	160	17x11 (B)	1.5%	DSVBAC17	60	150	130
DSVBAR22	95	260	240	22x14 (C)	1.5%	DSVBAC22	95	210	180



DEL/SAN
Supergrip PVC coated



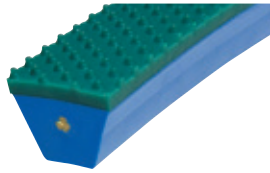
Reference	Traction strength (daN)	pulley Ø (mm)		Section	Tension	Reference	Traction strength (daN)	pulley Ø (mm)	
		Advised	Minimum					Advised	Minimum
DSVBAR13NA	35	150	130	13x8 (A)	1%	DSVBAC13NA	35	120	100
DSVBAR17NA	60	180	160	17x11 (B)	1.5%	DSVBAC17NA	60	150	130
DSVBAR22NA	95	260	240	22x14 (C)	1.5%	DSVBAC22NA	95	210	180

Food	CE - FDA*	Coefficient of friction	HDPE: 0.2	Temperature extremes	-20°C / +70°C
Hardness	95 ShA		Steel: 0.4		
Pretension	See table		Stainless steel: 0.5		
				Packaging	30m

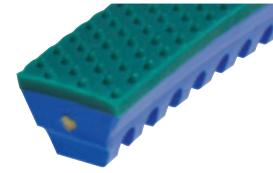
*Except Supergrip coatings (NA) and green SOUPLEX.



REINFORCED TRAPEZOIDAL PROFILES



DEL/SAN
Souplex 85 ShA
nubtop coated



Reference	Traction strength (daN)	pulley Ø (mm)		Section	Tension	Reference	Traction strength (daN)	pulley Ø (mm)	
		Advised	Minimum					Advised	Minimum
DSVBAR13SPI	35	170	150	13x8 (A)	1%	DSVBAC13SPI	35	140	120
DSVBAR17SPI	60	200	180	17x11 (B)	1.5%	DSVBAC17SPI	60	170	150
DSVBAR22SPI	95	280	260	22x14 (C)	1.5%	DSVBAC22SPI	95	230	200



DEL/SAN
Totalgrip 70 ShA
nubtop coated



Reference	Traction strength (daN)	pulley Ø mm		Section	Tension	Reference	Traction strength (daN)	pulley Ø (mm)	
		Advised	Minimum					Advised	Minimum
DSVBAR13TPI	35	160	140	13x8 (A)	1%	DSVBAC13TPI	35	130	110
DSVBAR17TPI	60	190	170	17x11 (B)	1.5%	DSVBAC17TPI	60	160	140
DSVBAR22TPI	95	270	250	22x14 (C)	1.5%	DSVBAC22TPI	95	220	190

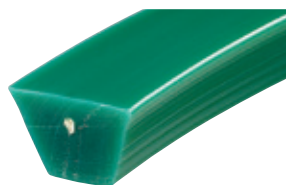
Food	CE - FDA*	Coefficient of friction	HDPE: 0.2	Temperature extremes	-20°C / +70°C
Hardness	95 ShA		Steel: 0.4		
Pretension	See table		Stainless steel: 0.5		

*Except Supergrip coatings (NA) and green SOUPLEX.



The recommended and minimum diameters are given for end-to-end joints.
The life of the belt is reduced on minimum diameters depending on the operating conditions (load, accumulation, stop/start operation, tension etc.).
In the case of overlap joints, use the recommended diameters for an optimal lifespan.

REINFORCED TRAPEZOIDAL PROFILES



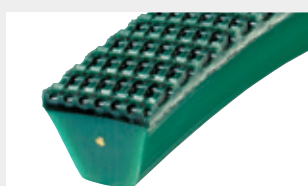
H15 / H16 green reinforced Aramid



H15
Plain

H16 Cogged

Reference	Traction strength (daN)	pulley Ø (mm)		Section	Tension	Reference	Traction strength (daN)	pulley Ø (mm)	
		Advised	Minimum					Advised	Minimum
H15GAR10	15	110	90	10x6 (Z)	1%	H16GAC10	15	80	65
H15GAR13	30	140	110	13x8 (A)	1%	H16GAC13	30	100	70
H15GAR17	50	170	140	17x11 (B)	1.5%	H16GAC17	50	130	110
H15GAR22	75	250	230	22x14 (C)	1.5%	H16GAC22	75	180	150
H15GAR32	140	350	300	32x19 (D)	1.5%	H16GAC32	140	300	250



H15 / H16 Supergrip PVC coated



H15
Plain

H16 Cogged

Reference	Traction strength (daN)	pulley Ø (mm)		Section	Tension	Reference	Traction strength (daN)	pulley Ø (mm)	
		Advised	Minimum					Advised	Minimum
H15GAR10NA	15	110	90	10x6 (Z)	1%	H16GAC10NA	15	80	65
H15GAR13NA	30	140	110	13x8 (A)	1%	H16GAC13NA	30	100	70
H15GAR17NA	50	170	140	17x11 (B)	1.5%	H16GAC17NA	50	130	110
H15GAR22NA	75	250	230	22x14 (C)	1.5%	H16GAC22NA	75	180	150
H15GAR32NA	140	350	300	32x19 (D)	1.5%	H16GAC32NA	140	300	250

Food
Hardness
Pretension

CE - FDA*
92 ShA
See table

Coefficient
of friction

HDPE: 0.25
Steel: 0.45
Stainless steel: 0.55

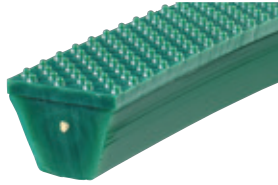
Temperature extremes
Packaging

-20°C / +70°C
30m

*Except Supergrip coatings (NA) and green SOUPLEX.



REINFORCED TRAPEZOIDAL PROFILES



H15
Plain

H15 / H16 Souplex 85 ShA nubtop coated



H16 Cogged

Reference	Traction strength (daN)	pulley Ø (mm)		Section	Tension	Reference	Traction strength (daN)	pulley Ø (mm)	
		Advised	Minimum					Advised	Minimum
H15GAR10SPI	15	130	110	10x6 (Z)	1%	H16GAC10SPI	15	100	80
H15GAR13SPI	30	160	130	13x8 (A)	1%	H16GAC13SPI	30	120	100
H15GAR17SPI	50	190	170	17x11 (B)	1.5%	H16GAC17SPI	50	150	130
H15GAR22SPI	75	270	250	22x14 (C)	1.5%	H16GAC22SPI	75	200	170
H15GAR32SPI	140	370	320	32x19 (D)	1.5%	H16GAC32SPI	140	320	270



H15
Plain

H15 / H16 Totalgrip 70 ShA nubtop coated



H16 Cogged

Reference	Traction strength (daN)	pulley Ø (mm)		Section	Tension	Reference	Traction strength (daN)	pulley Ø (mm)	
		Advised	Minimum					Advised	Minimum
H15GAR10TPI	15	120	100	10x6 (Z)	1%	H16GAC10TPI	15	90	75
H15GAR13TPI	30	150	120	13x8 (A)	1%	H16GAC13TPI	30	110	80
H15GAR17TPI	50	180	160	17x11 (B)	1.5%	H16GAC17TPI	50	140	120
H15GAR22TPI	75	260	240	22x14 (C)	1.5%	H16GAC22TPI	75	190	160
H15GAR32TPI	140	360	310	32x19 (D)	1.5%	H16GAC32TPI	140	310	260

Food	CE - FDA*	Coefficient of friction	HDPE: 0.25	Temperature extremes	-20°C / +70°C
Hardness	92 ShA		Steel: 0.45		
Pretension	See table		Stainless steel: 0.55		

*Except Supergrip coatings (NA) and green SOUPLEX.



The recommended and minimum diameters are given for end-to-end joints. The life of the belt is reduced on minimum diameters depending on the operating conditions (load, accumulation, stop/start operation, tension etc.). In the case of overlap joints, use the recommended diameters for an optimal lifespan.

REINFORCED TRAPEZOIDAL PROFILES



SOUPLEX white reinforced Aramid

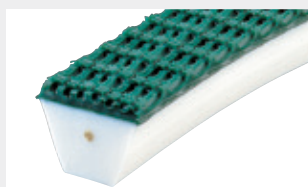


Plain

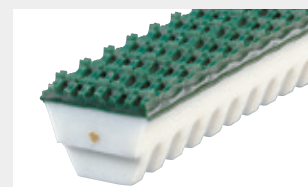
Reference	Traction strength (daN)	pulley Ø (mm)		Section	Tension
		Advised	Minimum		
SXVWAR10	10	90	75	10x6 (Z)	0.5%
SXVWAR13	25	100	80	13x8 (A)	0.5%
SXVWAR17	40	150	130	17x11 (B)	1%
SXVWAR22	60	220	200	22x14 (C)	1.5%
SXVWAR32	120	280	250	32x19 (D)	1.5%

Cogged

Reference	Traction strength (daN)	pulley Ø (mm)	
		Advised	Minimum
SXVWAC10	10	60	50
SXVWAC13	25	80	60
SXVWAC17	40	110	90
SXVWAC22	60	160	130
SXVWAC32	120	220	180



SOUPLEX reinforced Supergrip PVC coated



Plain

Reference	Traction strength (daN)	pulley Ø (mm)		Section	Tension
		Advised	Minimum		
SXVWAR10NA	10	90	75	10x6 (Z)	0.5%
SXVWAR13NA	25	100	80	13x8 (A)	0.5%
SXVWAR17NA	40	150	130	17x11 (B)	1%
SXVWAR22NA	60	220	200	22x14 (C)	1.5%
SXVWAR32NA	120	280	250	32x19 (D)	1.5%

Cogged

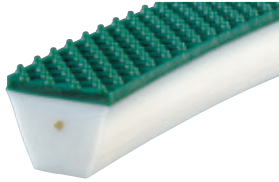
Reference	Traction strength (daN)	pulley Ø (mm)	
		Advised	Minimum
SXVWAC10NA	10	60	50
SXVWAC13NA	25	80	60
SXVWAC17NA	40	110	90
SXVWAC22NA	60	160	130
SXVWAC32NA	120	220	180

Food Hardness	CE - FDA* 85 ShA	Coefficient of friction	HDPE: 0.35	Temperature extremes	-20°C / +70°C
Pretension	See table		Steel: 0.6		
			Stainless steel: 0.7	Packaging	30m

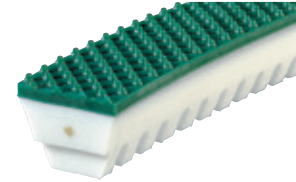
* Except Supergrip coatings (NA) and green SOUPLEX.



REINFORCED TRAPEZOIDAL PROFILES



SOUPLEX
Souplex 85 ShA
nubtop coated



Plain

Reference	Traction strength (daN)	pulley Ø (mm)	
		Advised	Minimum
-	-	-	-
SXWAR13SPI	25	120	100
SXWAR17SPI	40	170	150
SXWAR22SPI	60	240	210
SXWAR32SPI	120	330	280

Cogged

Reference	Traction strength (daN)	pulley Ø (mm)	
		Advised	Minimum
-	-	-	-
SXWAC10SPI	10	90	75
SXWAC13SPI	25	100	80
SXWAC17SPI	40	130	110
SXWAC22SPI	60	180	150
SXWAC32SPI	120	240	200



SOUPLEX
Totalgrip 70 ShA
nubtop coated



Plain

Reference	Traction strength (daN)	pulley Ø (mm)	
		Advised	Minimum
-	-	-	-
SXWAR13TPI	25	110	90
SXWAR17TPI	40	160	140
SXWAR22TPI	60	230	200
SXWAR32TPI	120	300	250

Cogged

Reference	Traction strength (daN)	pulley Ø (mm)	
		Advised	Minimum
-	-	-	-
SXWAC10TPI	10	80	70
SXWAC13TPI	25	90	75
SXWAC17TPI	40	120	100
SXWAC22TPI	60	170	140
SXWAC32TPI	120	230	190

Food Hardness	CE - FDA* 85 ShA	Coefficient of friction	HDPE: 0.35	Temperature extremes	-20°C / +60°C
Pretension	See table		Steel: 0.6		
			Stainless steel: 0.7	Packaging	30m

* Except Supergrip coatings (INA) and green SOUPLEX.



The recommended and minimum diameters are given for end-to-end joints. The life of the belt is reduced on minimum diameters depending on the operating conditions (load, accumulation, stop/start operation, tension etc.). In the case of overlap joints, use the recommended diameters for an optimal lifespan.

POLYBELT+



PV17PCK7085

POLYBELT+ blue reinforced Aramid



PV17PCK7095

Reference	Traction strength (daN)	pulley Ø (mm)		Section	Tension
		Advised	Backflex		
PV17PCK7085	65	120	140	17x11 (B)	1%
	112	120	140	17x11 (B)	1.5%

Reference	Traction strength (daN)	pulley Ø (mm)	
		Advised	Backflex
PV17PCK7095	68	150	170
	124	150	170

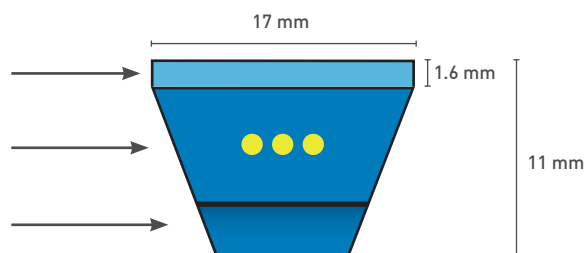
Food	CE - FDA	Temperature extremes	-20°C / +70°C
Hardness of belt	85 ShA		
Hardness of coating	70 ShA	Coil length	50m
Pretension	1 to 1.5%		
Friction coefficient	HDPE: 0.35	Steel: 0.6	Stainless steel: 0.7

Food	CE - FDA	Temperature extremes	-20°C / +70°C
Hardness of belt	95 ShA		
Hardness of coating	70 ShA	Coil length	50m
Pretension	1 to 1.5%		
Friction coefficient	HDPE: 0.2	Steel: 0.4	Stainless steel: 0.5

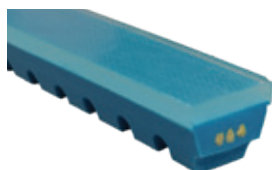
Overlap joint (see page 43)

APPLICATIONS

- Roller driving
 - Conveyance of heavy loads
- 1 High grip cover in PU 70 ShA
 - 3 cords of Aramid reinforcement
 - 1 trapezoidal base profile in cogged 85 or 95 ShA PU



In the case of tangential roller drives in a greasy and/or moist environment, we recommend replacing the top cover with our PU 70 ShA Totalgrip SG3 coating.

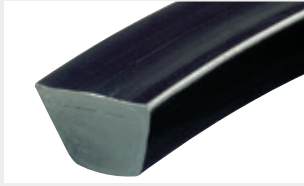


Other coating possibilities, on the upper side.

- TOTALGRIP smooth
- TOTALGRIP nubtop



TRAPEZOIDAL PROFILES



DEL/ROC black



Plain

Cogged

Reference	Traction strength (daN)	pulley Ø (mm)		Section	Tension	Reference	Traction strength (daN)	pulley Ø (mm)	
		Advised	Minimum					Advised	Minimum
DRVN10	22	120	100	10x6 (Z)	2%	DRVNCR10	15	100	80
DRVN13	40	160	140	13x8 (A)	2%	DRVNCR13	28	120	100
DRVN17	74	220	200	17x11 (B)	2%	DRVNCR17	51	160	140
DRVN22	122	280	250	22x14 (C)	2%	DRVNCR22	85	240	190



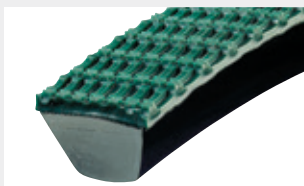
DEL/ROC white



Plain

Cogged

Reference	Traction strength (daN)	pulley Ø (mm)		Section	Tension	Reference	Traction strength (daN)	pulley Ø (mm)	
		Advised	Minimum					Advised	Minimum
DRWW10	22	120	100	10x6 (Z)	2%	DRWWCR10	15	100	80
DRWW13	40	160	140	13x8 (A)	2%	DRWWCR13	28	120	100
DRWW17	74	220	200	17x11 (B)	2%	DRWWCR17	51	160	140
DRWW22	122	280	250	22x14 (C)	2%	DRWWCR22	85	240	190



DEL/ROC Supergrip PVC coated



Plain

Cogged

Reference	Traction strength (daN)	pulley Ø (mm)		Section	Tension	Reference	Traction strength (daN)	pulley Ø (mm)	
		Advised	Minimum					Advised	Minimum
DRVN10NA	22	120	100	10x6 (Z)	2%	DRVNCR10NA	15	100	80
DRVN13NA	40	160	140	13x8 (A)	2%	DRVNCR13NA	28	120	100
DRVN17NA	74	220	200	17x11 (B)	2%	DRVNCR17NA	51	160	140
DRVN22NA	122	280	250	22x14 (C)	2%	DRVNCR22NA	85	240	190

Food	CE - FDA*	Coefficient of friction	HDPE: 0.15 - 0.2	Temperature extremes	-30°C / +90°C
Hardness	100 ShA - 55 ShD		Steel: 0.35 - 0.4		
Pretension	0.5 - 2%		Stainless steel: 0.5		
				Packaging	30 m

*Except Supergrip coated (NA).

TRAPEZOIDAL PROFILES



DEL/FLEX red

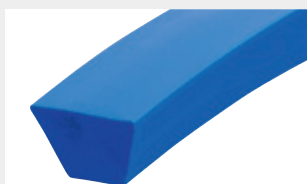


Plain

Reference	Traction strength (daN)	pulley Ø (mm)	
		Advised	Minimum
DFVR08	7	55	50
DFVR10	11	80	65
DFVR13	20	100	80
DFVR17	36	150	130
DFVR22	60	220	180
DFVR32	118	300	250

Cogged

Reference	Tension	Reference	Traction strength (daN)	pulley Ø (mm)	
				Advised	Minimum
8x5 (M)	5%	-	-	-	-
10x6 (Z)	5%	DFVRCR10	7	60	50
13x8 (A)	5%	DFVRCR13	14	80	60
17x11 (B)	5%	DFVRCR17	25	110	90
22x14 (C)	5%	DFVRCR22	42	150	120
32x19 (D)	5%	DFVRCR32	82	220	180



DEL/FLEX blue

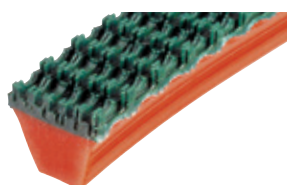


Plain

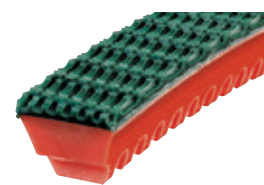
Reference	Traction strength (daN)	pulley Ø (mm)	
		Advised	Minimum
DFVB06	4.5	45	40
DFVB08	7	55	50
DFVB10	11	80	65
DFVB13	20	100	80
DFVB17	36	150	130

Cogged

Reference	Tension	Reference	Traction strength (daN)	pulley Ø (mm)	
				Advised	Minimum
6x4 (Y)	5%	-	-	-	-
8x5 (M)	5%	-	-	-	-
10x6 (Z)	5%	DFVBCR10	7	60	50
13x8 (A)	5%	DFVBCR13	14	80	60
17x11 (B)	5%	DFVBCR17	25	110	90



DEL/FLEX Supergrip PVC coated



Plain

Reference	Traction strength (daN)	pulley Ø (mm)	
		Advised	Minimum
DFVR10NA	11	80	65
DFVR13NA	20	100	80
DFVR17NA	36	150	130
DFVR22NA	60	220	180
DFVR32NA	118	300	250

Cogged

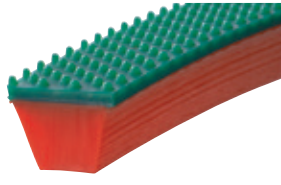
Reference	Tension	Reference	Traction strength (daN)	pulley Ø (mm)	
				Advised	Minimum
10x6 (Z)	5%	DFVRCR10NA	7	60	50
13x8 (A)	5%	DFVRCR13NA	14	80	60
17x11 (B)	5%	DFVRCR17NA	25	110	90
22x14 (C)	5%	DFVRCR22NA	42	150	120
32x19 (D)	5%	DFVRCR32NA	82	220	180

Food Hardness	CE - FDA* 90 ShA	Coefficient of friction	HDPE: 0.25 Steel: 0.5 Stainless steel: 0.6	Temperature extremes	-20°C / +70°C
Pretension	3 - 6%		Packaging	30 m	

* Except Supergrip coatings (NA) and green SOUPLEX.



TRAPEZOIDAL PROFILES



DEL/FLEX Souplex 85 ShA nubtop coated



Plain

Cogged

Reference	Traction strength (daN)	pulley Ø (mm)		Section	Tension	Reference	Traction strength (daN)	pulley Ø (mm)	
		Advised	Minimum					Advised	Minimum
DFVR10SPI	15	90	80	10x6 (Z)	5%	DFVRCR10SPI	11	80	70
DFVR13SPI	25	120	100	13x8 (A)	5%	DFVRCR13SPI	19	100	80
DFVR17SPI	43	170	150	17x11 (B)	5%	DFVRCR17SPI	32	130	110
DFVR22SPI	69	240	210	22x14 (C)	5%	DFVRCR22SPI	51	170	140
DFVR32SPI	132	340	260	32x19 (D)	5%	DFVRCR32SPI	96	240	200



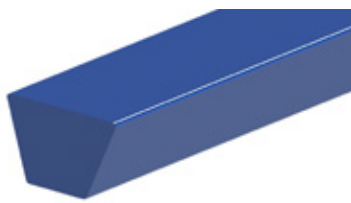
DEL/FLEX Totalgrip 70 ShA nubtop coated



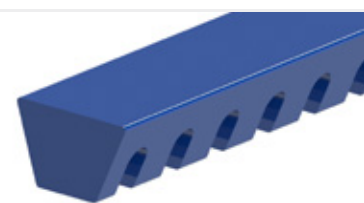
Plain

Cogged

Reference	Traction strength (daN)	pulley Ø (mm)		Section	Tension	Reference	Traction strength (daN)	pulley Ø (mm)	
		Advised	Minimum					Advised	Minimum
DFVR10TPI	11	85	75	10x6 (Z)	5%	DFVRCR10TPI	7	70	60
DFVR13TPI	20	110	90	13x8 (A)	5%	DFVRCR13TPI	14	90	75
DFVR17TPI	36	160	140	17x11 (B)	5%	DFVRCR17TPI	25	120	100
DFVR22TPI	60	230	200	22x14 (C)	5%	DFVRCR22TPI	42	160	130
DFVR32TPI	118	310	260	32x19 (D)	5%	DFVRCR32TPI	82	230	190



DEL/FLEX metal detectable



Plain

Cogged

Reference	Traction strength (daN)	pulley Ø (mm)		Section	Tension	Reference	Traction strength (daN)	pulley Ø (mm)	
		Advised	Minimum					Advised	Minimum
DFVB08MD	6	55	50	8x5 (M)	5%	-	-	-	-
DFVB10MD	10	80	65	10x6 (Z)	5%	DFVBCR10MD	6	60	50
DFVB13MD	18	100	80	13x8 (A)	5%	DFVBCR13MD	13	80	60

Available from stock in rolls of 30 m

Food	CE - FDA*	Coefficient of friction	HDPE: 0.25	Temperature extremes	-20°C / +70°C
Hardness	90 ShA		Steel: 0.5		
Pretension	3 - 6%		Stainless steel: 0.6		

* Except Supergrip coatings (NA) and green SOUPLEX.

CE for DEL/FLEX Metal detectable

TRAPEZOIDAL PROFILES



SOUPLEX brown

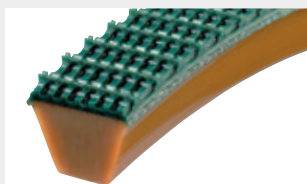


Plain

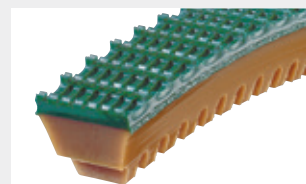
Reference	Traction strength (daN)	pulley Ø (mm)		Section	Tension
		Advised	Minimum		
SXVM08	4	50	40	8x5 (M)	8%
SXVM10	6	70	55	10x6 (Z)	8%
SXVM13	12	80	70	13x8 (A)	8%
SXVM17	22	130	110	17x11 (B)	8%
SXVM22	36	170	130	22x14 (C)	8%
SXVM32	71	250	220	32x19 (D)	8%

Cogged

Reference	Traction strength (daN)	pulley Ø (mm)	
		Advised	Minimum
-	-	-	-
SXVMCR10	4	50	40
SXVMCR13	8	60	50
SXVMCR17	15	90	70
SXVMCR22	25	130	110
SXVMCR32	50	180	150



SOUPLEX Supergrip PVC coated



Plain

Reference	Traction strength (daN)	pulley Ø (mm)		Section	Tension
		Advised	Minimum		
SXVM08NA	4	50	40	8x5 (M)	8%
SXVM10NA	6	70	55	10x6 (Z)	8%
SXVM13NA	12	80	70	13x8 (A)	8%
SXVM17NA	22	130	110	17x11 (B)	8%
SXVM22NA	36	170	130	22x14 (C)	8%
SXVM32NA	71	250	220	32x19 (D)	8%

Cogged

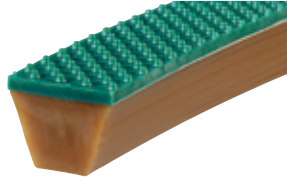
Reference	Traction strength (daN)	pulley Ø (mm)	
		Advised	Minimum
-	-	-	-
SXVMCR10NA	4	50	40
SXVMCR13NA	8	60	50
SXVMCR17NA	15	90	70
SXVMCR22NA	25	130	110
SXVMCR32NA	50	180	150

Food	CE - FDA*	Coefficient of friction	HDPE: 0.35	Temperature extremes	-20°C / +60°C
Hardness	85 ShA		Steel: 0.6		
Pretension	5 - 8%		Stainless steel: 0.7		
				Packaging	30 m

*Except Supergrip coatings (NA) and green SOUPLEX.



TRAPEZOIDAL PROFILES



SOUPLEX
Souplex 85 ShA
nubtop coated



Plain

Cogged

Reference	Traction strength (daN)	pulley Ø (mm)		Section	Tension	Reference	Traction strength (daN)	pulley Ø (mm)	
		Advised	Minimum					Advised	Minimum
SXVM10SPI	10	80	70	10x6 (Z)	8%	SXVMCR10SPI	8	70	60
SXVM13SPI	17	100	90	13x8 (A)	8%	SXVMCR13SPI	13	80	70
SXVM17SPI	29	150	130	17x11 (B)	8%	SXVMCR17SPI	22	110	90
SXVM22SPI	45	190	150	22x14 (C)	8%	SXVMCR22SPI	34	150	130
SXVM32SPI	85	280	240	32x19 (D)	8%	SXVMCR32SPI	64	200	170



SOUPLEX
Totalgrip 70 ShA
nubtop coated



Plain

Cogged

Reference	Traction strength (daN)	pulley Ø (mm)		Section	Tension	Reference	Traction strength (daN)	pulley Ø (mm)	
		Advised	Minimum					Advised	Minimum
SXVM10TPI	6	75	65	10x6 (Z)	8%	SXVMCR10TPI	4	60	50
SXVM13TPI	12	90	80	13x8 (A)	8%	SXVMCR13TPI	8	70	60
SXVM17TPI	22	140	120	17x11 (B)	8%	SXVMCR17TPI	15	100	80
SXVM22TPI	36	180	140	22x14 (C)	8%	SXVMCR22TPI	25	140	120
SXVM32TPI	71	260	230	32x19 (D)	8%	SXVMCR32TPI	50	190	160

Food	CE - FDA*	Coefficient of friction	HDPE: 0.35	Temperature extremes	-20°C / +60°C
Hardness	85 ShA		Steel: 0.6		
Pretension	5 - 8%		Stainless steel: 0.7		

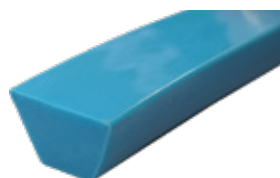
*Except Supergrip coatings (NA) and green SOUPLEX.

TRAPEZOIDAL PROFILES

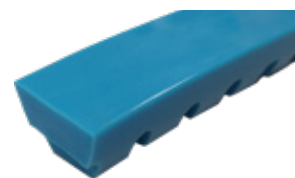


Blue SOUPLEX 80 ShA and SUPERFLEX 70 ShA profiles are mainly used as welded guides on our DEL/FLEX and SOUPLEX conveyor belts.

The elasticity, flexibility and adhesion of these profiles limit them to handling lightweight products without accumulation on short centre distances and preferably on HDPE slider beds.



SOUPLEX blue



Plain

Reference	Traction strength (daN)	pulley Ø (mm)		Section	Tension
		Advised	Minimum		
SXVB06-0001	2.5	30	25	6x4 (Y)	8%
SXVB08-0001	3.5	45	35	8x5 (M)	8%
SXVB10-0001	5.5	65	50	10x6 (Z)	8%
SXVB13-0001	10	75	65	13x8 (A)	8%
SXVB17-0001	18	120	100	17x11 (B)	8%

Cogged

Reference	Traction strength (daN)	pulley Ø (mm)	
		Advised	Minimum
-	-	-	-
-	-	-	-
SXVBCR10-0001	3.7	45	35
SXVBCR13-0001	7.5	55	45
SXVBCR17-0001	12	80	65

Food	CE - FDA	Coefficient of friction	HDPE: 0.35	Temperature extremes	-20°C / +60°C
Hardness	80 ShA		Steel: 0.6		
Pretension	6 to 10%		Stainless steel: 0.7		



SUPERFLEX translucent



Plain

Reference	Traction strength (daN)	pulley Ø (mm)		Section	Tension
		Advised	Minimum		
SFVT08	3	35	30	8x5 (M)	10%
SFVT10	4.5	55	45	10x6 (Z)	10%
SFVT13	8	70	60	13x8 (A)	10%
SFVT17	13	110	90	17x11 (B)	10%

Cogged

Reference	Traction strength (daN)	pulley Ø (mm)	
		Advised	Minimum
-	-	-	-
-	-	-	-
SFVTCR13	5	50	40
SFVTCR17	10	75	60

Food	CE - FDA	Coefficient of friction	HDPE: 0.5	Temperature extremes	-20°C / +40°C
Hardness	70 ShA		Steel: 0.7		
Pretension	8 - 12%		Stainless steel: 0.8		



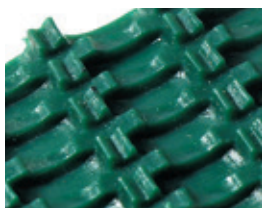
TRAPEZOIDAL PROFILE COATINGS

COATINGS OF SOUPLEX 85 ShA AND TOTALGRIP 70 ShA PU

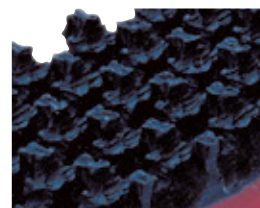


Quality	Color	Smooth	Nubtop	Sawtooth	SG3	Trellis
Standard SOUPLEX	Green	SLI	SPI	SUS	SSG	SLO
SOUPLEX Food	White / Blue					
TOTALGRIP Food	Translucent	TLI	TPI	TUS	TSG	TLO

SUPERGRIP COATINGS



GREEN PVC 40 ShA



BLACK RUBBER 60 ShA

Reference

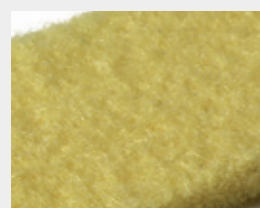
NA

NC

OTHER COATINGS



POLYESTER FELT

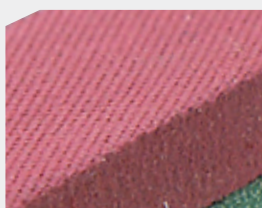


ARAMID FELT

Reference

FP

FA



LINATEX 40 ShA



LYCRA 25 ShA

Reference

LI

LY

For any coated belt, complete the item code by referencing the coating reference letters.

TRAPEZOIDAL PROFILES WITH A RIDGED TOPGRIP



adhesive
flexible
abrasion resistant

The TOPGRIP ridge can be welded on all trapezoidal profiles in the range except for the DEL/ROC profile, providing a wide choice of ridged profiles for application depending on the loads carried and pulley diameters available.

The technical characteristics (traction force, tension, friction coefficients,...) are those of trapezoidal profiles, only the coil diameters will change:

Packaging 30 m

Food: CE - FDA

DEL/SAN Reinforced



DSVBAR-TO
95 ShA

H15 Reinforced



H15GAR-TO
92 ShA

SOUPLEX Reinforced



SXWAR-TO
85 ShA

DEL/FLEX



DFVR-TO
90 ShA

SOUPLEX



SXVM-TO
85 ShA

Reference
Hardness

Section (mm)	pulley Ø (mm)		pulley Ø (mm)		pulley Ø (mm)		pulley Ø (mm)		pulley Ø (mm)	
	Advised	Minimum	Advised	Minimum	Advised	Minimum	Advised	Minimum	Advised	Minimum
13x15 (A)	180	160	170	150	150	130	150	130	130	110
17x20 (B)	210	190	200	180	180	160	180	160	160	140
22x25 (C)	290	270	280	260	240	210	260	230	220	200

DEL/SAN Cogged Reinforced



DSVBAC-TO
95 ShA

H15 Cogged Reinforced



H16GAC-TO
92 ShA

SOUPLEX Cogged Reinforced



SXWAC-TO
85 ShA

DEL/FLEX Cogged



DFVCR-TO
90 ShA

SOUPLEX Cogged



SXVMCR-TO
85 ShA

Reference
Hardness

Section (mm)	pulley Ø (mm)		pulley Ø (mm)		pulley Ø (mm)		pulley Ø (mm)		pulley Ø (mm)	
	Advised	Minimum	Advised	Minimum	Advised	Minimum	Advised	Minimum	Advised	Minimum
13x15 (A)	150	130	130	110	120	100	120	100	100	90
17x20 (B)	180	160	160	140	140	120	140	120	120	100
22x25 (C)	240	210	220	200	190	160	190	170	180	150



The recommended and minimum diameters are given for end-to-end joints.

The life of the belt is reduced on minimum diameters depending on the operating conditions (load, accumulation, stop/start operation, tension etc.).

In the case of overlap joints, use the recommended diameters for an optimal lifespan.



TRAPEZOIDAL PROFILES WITH RIDGES



Plain

DEL/FLEX red



Cogged

Reference	Traction strength (daN)	pulley Ø (mm)		Section	Tension	Reference	Traction strength (daN)	pulley Ø (mm)	
		Advised	Minimum					Advised	Minimum
DFVR13F2	28	160	140	13x15 (A)	5%	DFVFCR13F2	22	120	100
DFVR17F2	50	240	200	17x20 (B)	5%	DFVFCR17F2	35	170	140
DFVR22F2	81	300	240	22x25 (C)	5%	DFVFCR22F2	56	220	190

Food	CE - FDA	Coefficient of friction	HDPE: 0.25	Temperature extremes	-20°C / +70°C
Hardness	90 ShA		Steel: 0.5		
Pretension	3 - 6%		Stainless steel: 0.6		
Packaging			30 m		



Plain

SOUPLEX white Reinforced Aramid



Cogged

Reference	Traction strength (daN)	pulley Ø (mm)		Section	Tension	Reference	Traction strength (daN)	pulley Ø (mm)	
		Advised	Minimum					Advised	Minimum
SXVWAR17F2	50	200	170	17x20 (B)	1.5%	SXVWAC17F2	50	160	130
SXVWAR22F2	64	250	220	22x25 (C)	1.5%	SXVWAC22F2	64	200	170

Food	CE - FDA	Coefficient of friction	HDPE: 0.35	Temperature extremes	-20°C / +60°C
Hardness	85 ShA		Steel: 0.6		
Pretension	1 - 1.5%		Stainless steel: 0.7		
Packaging			30 m		

BRUSH PROFILES



Quality	Reference	Section (mm)	Minimum pulley (mm)	Bristle height	Number rows	Pitch (mm)	Bristle section (mm)
DEL/FLEX	DFVR13BR	13x8 (A)	120	27	1	8	40/100
SOUPLEX	SXVM17BR	17x11 (B)	180	60	2	8	40/100
SOUPLEX	SXVM22BR	22x14 (C)	240	60	3	8	40/100

White Nylon bristles.

Special brush profiles:

- Height
- Section
- Bristle gauge
- Special inserts
- Bristle colour

On request.

