

SPECIAL PROFILES



| Section (mm) | | 25 x 2.3 with guide 4 x 2.5 | | 12 x 2.3 with guide 4 x 2.5 | | 25 x 2.3 with guide 4 x 2.5 | | 30 x 8 | 30 x 8 | 8 x 6.5 |
|-------------------------|---------|-----------------------------|----------|-----------------------------|----------|-----------------------------|------------|-----------------------|------------------|-----------------------|
| Top side | | embossed | smooth | embossed | smooth | embossed | smooth | smooth | smooth | cambered top |
| reference/ colour | green | ATC63 | ATC63LI | ATC12 | ATC12LI | - | - | - | - | - |
| | blue | ATC63B | ATC63BLI | ATC12B | ATC12BLI | ATC63BMD | ATC63BLIMD | SXVVB30 light blue | SXVVM30 brown | SXVB08D0 dark blue |
| Food | | CE - FDA | | CE - FDA | | CE | | CE - FDA | CE - FDA | CE - FDA |
| Hardness | | 90 ShA | | 90 ShA | | 90 ShA | | 80 ShA | 85 ShA | 87 ShA |
| Traction strength (daN) | | 16 | | 8,8 | | 14 | | 20 | 25 | 7 |
| Tension | | 5% | | 5% | | 5% | | 8% | 8% | 6% |
| pulley Ø (mm) | Advised | 60 | | 60 | | 60 | | 80 | 100 | 55 |
| | Minimum | 50 | | 50 | | 50 | | 70 | 90 | 45 |

* Mafdel recommends that products intended for use are first tested in your environment to validate compliance with the desired detection level.



U-shaped profile

Hardness: 85 ShA
Pulley tyres for wire cutting etc.



U-shaped profile

Hardness: 85 ShA
Pulley tyres for wire cutting etc.



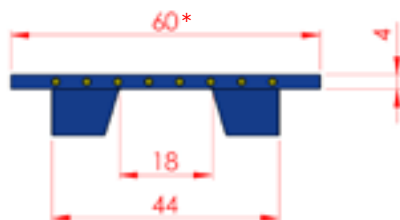
Goulotte Profile

Hardness : 70 ShA
Width: 32mm
Support : flat belt to be agreed

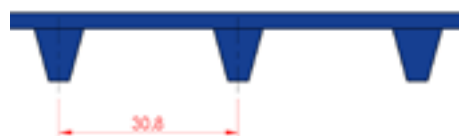
TRACROLL®

Flat, positively driven belt reinforced with Aramid cords, ref TRPB4R30.

The TRACROLL® belt is perfectly suited for applications such as tangential roller drives, requiring high traction resistance, and good grip.



* Minimum gap 45mm.

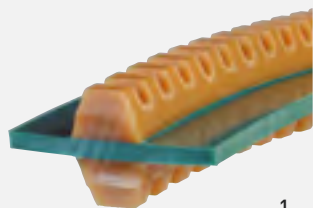


- Large load capacity due to the reinforcement of Aramid cords.
- No risk of slipping, even in a greasy and humid environment.
- Tension-free operation reducing stress on the conveyor's mechanical components.
- Without a tension system, the fixed pulleys facilitate transfers between conveyors.
- Sprocket drive for 40mm square shaft, or, for motorised drums. Consult us.
- Food CE/FDA.



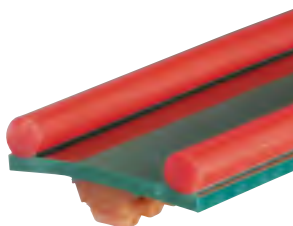


SPECIAL PROFILES



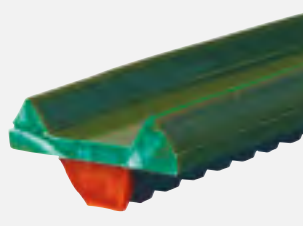
1

Flat belt with trapezoidal profiles above and below.



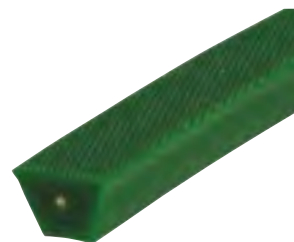
2

Flat belt with a trapezoidal profile below and round walls above.



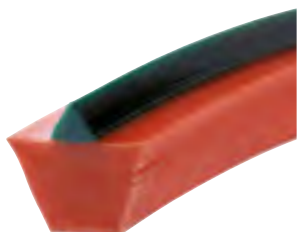
3

Flat belt with a trapezoidal profile below and SF7 walls above.



4

Reinforced trapezoidal profile with ATC surface embossing.



5

Trapezoidal profile with an SF7 above.



6

Reinforced trapezoidal profile with a round profile above.



7

Trapezoidal profiles welded back to back to create a hexagon profile



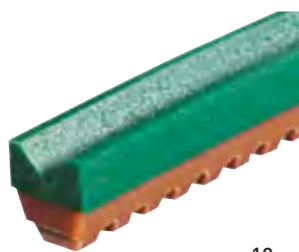
8

Asymmetrical hexagonal profile with custom machining.



9

Trapezoidal profile with a V-shaped groove of varying depth.



10

Trapezoidal profile with a V-shaped coating.



11

Trapezoidal profile with a round groove of varying depth.



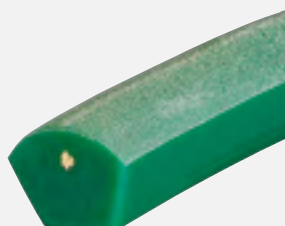
12

Trapezoidal profile with a rectangular channel



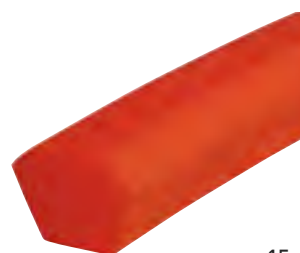
13

Trapezoidal profile with machined sidewalls.



14

Reinforced dome-topped trapezoidal profile.



15

Trapezoidal profile with chamfered edges.



16

Trapezoidal profile reduced in height.