

CONVEYOR BELTS



Mafdel reserves the right to add, modify or delete any of its products without prior notice.
This information is given as a guide, it could in no case call into question the responsibility of the company Mafdel.

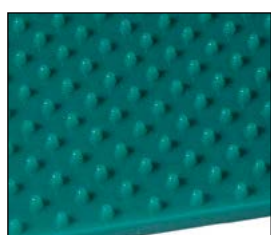


CONVEYOR BELTS

		Lower Surface	Upper Surface	Embossing	Max Width (mm)	Thickness (mm)							
						1,5	1,6	2	2,3	2,5	3	4	5
DEL/ROC	100 ShA 55 ShD	Smooth	Smooth	No	1850								
DEL/ROC	100 ShA 55 ShD	Structured	Smooth	No	1850								
DEL/FLEX	95 ShA	Smooth	Smooth	Yes	1850								
DEL/FLEX	95 ShA	Structured	Smooth	Yes	1850								
DEL/FLEX	93 ShA	Smooth	Smooth	Yes	1850								
DEL/FLEX	93 ShA	Structured	Smooth	Yes	1850								
DEL/FLEX	93 ShA	Reinforced	Smooth	Yes	1850								
SOUPLEX	85 ShA	Smooth	Smooth	Yes	1850								
SOUPLEX	85 ShA	Structured	Smooth	Yes	1850								
SOUPLEX	85 ShA	Smooth	Smooth	Yes	1850								
FLATBELT	95 ShA	Smooth	Smooth	No	350								
PROBELT	95 ShA	Smooth	Smooth	No	350								
ELASTOBELT	80 ShA 70 ShA	Smooth	Smooth	Yes	360								
Covering TOTALGRIP	70 ShA	Smooth	Smooth	Yes	360								
Covered PRIMAFLEX	90 ShA	Smooth or brush	Smooth	Yes	360								

DEL/ROC, DEL/FLEX and SOUPLEX guides upon request

Possibility of studs, sawtooth, SG3 or lattice embossing on the upper surfaces (except DEL/ROC materials).
Maximum width: 380 mm. Colours - green, white, blue.



Studs (PI)



Sawtooth (US)

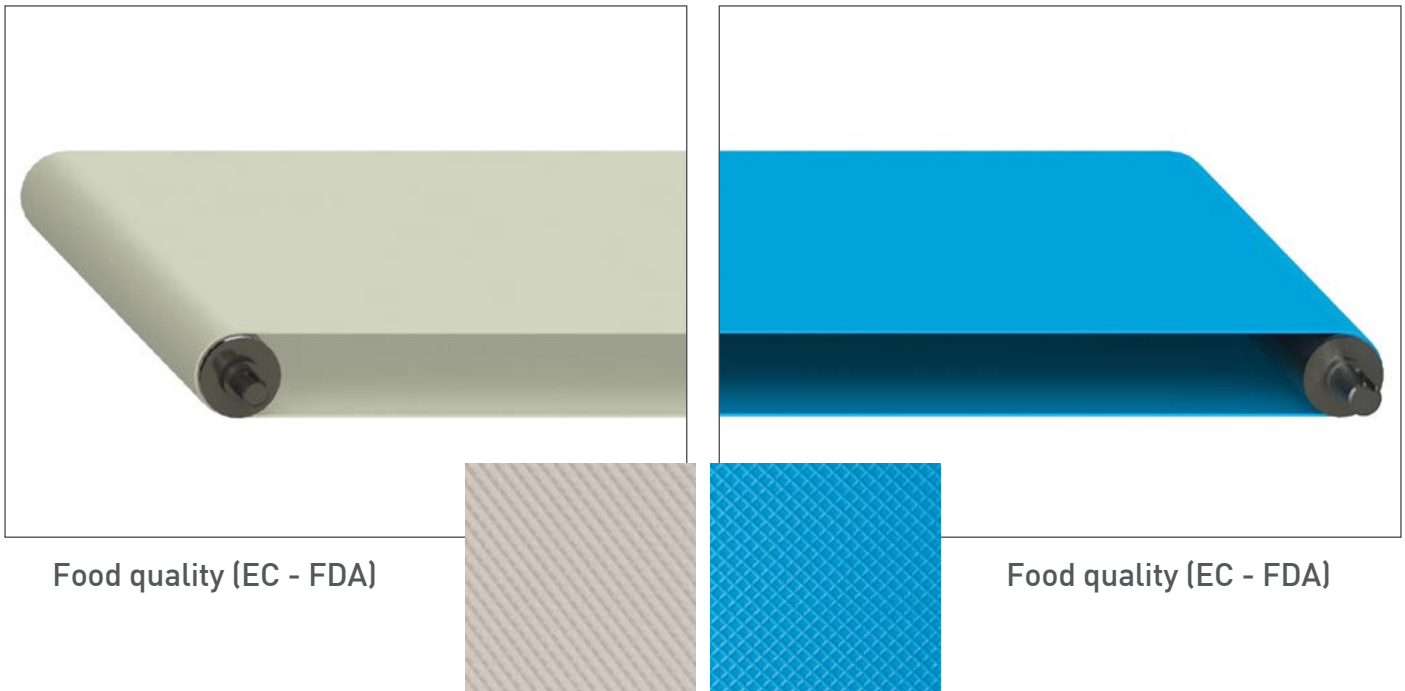


SG3 (SG)



Lattice (LO)

DEL/ROC



Characteristics

- Underside smooth or structured.
- Easy to clean.
- Abrasion resistant.
- Resistant to chemical attacks.
- Excellent tensile strength.
- Good friction coefficient on support beds.

Application

- Medium to heavy load capacity.
- Accumulation possible.
- Full load start-up possible.
- Suitable for long centre distances.

EMBOSSED underside (EM)

- Reduces friction on stainless in wet or fatty environments.
- Increased drive traction.

Methods of joining

- Butt welded.
- Overlap in heat press
- Electrode welded.
- Stainless or plastic fasteners (including integral welded fasteners).

Application of trapezoidal guides, flights and perforations on request.



DEL/ROC

DEL/ROC	
Colour	Ivory or Blue
Material	Polyester Elastomer
Hardness	100 ShA - 55 ShD
Upper surface	Smooth
Lower surface	Smooth or embossed (EM)
Traction force	9 daN/cm ² of section at 0.5% tension
	18 daN/cm ² of section at 1% tension
	27 daN/cm ² of section at 2% tension
Installation tension	0.5% to 2% depending on conditions
Temperature range	-30°C / +90°C
Coefficient of friction	HDPE 0.15 - 0.2
	Steel 0.35 - 0.4
	Stainless 0.5

Flat Belt Width < 100mm	Conveyor belt Width ≥ 100mm	Colour	Belt Thickness (mm)	Maximum Width (mm)	Minimum Ø Pulley (mm)	Weight (kg/m ²)
DRPI1.5	DRBI1.5		1.5	1850	30	1.8
DRPI2	DRBI2		2	1850	40	2.4
DRPI2EM	DRBI2EM					
DRPB2	DRBB2					
DRPB2EM	DRBB2EM		2.5	1850	60	3
DRPI2.5	DRBI2.5					
DRPI3	DRBI3					
DRPI3EM	DRBI3EM		3	1850	80	3.6
DRPB3	DRBB3					
DRPB3EM	DRBB3EM					
DRPI4	DRBI4		4	1850	160	4.8
DRPB4	DRBB4					
DRPB4EM	DRBB4EM					
DRPI5	DRBI5		5	1850	200	6
DRPB5	DRBB5					

DEL/ROC GUIDE PROFILES minimum roller Ø (mm)

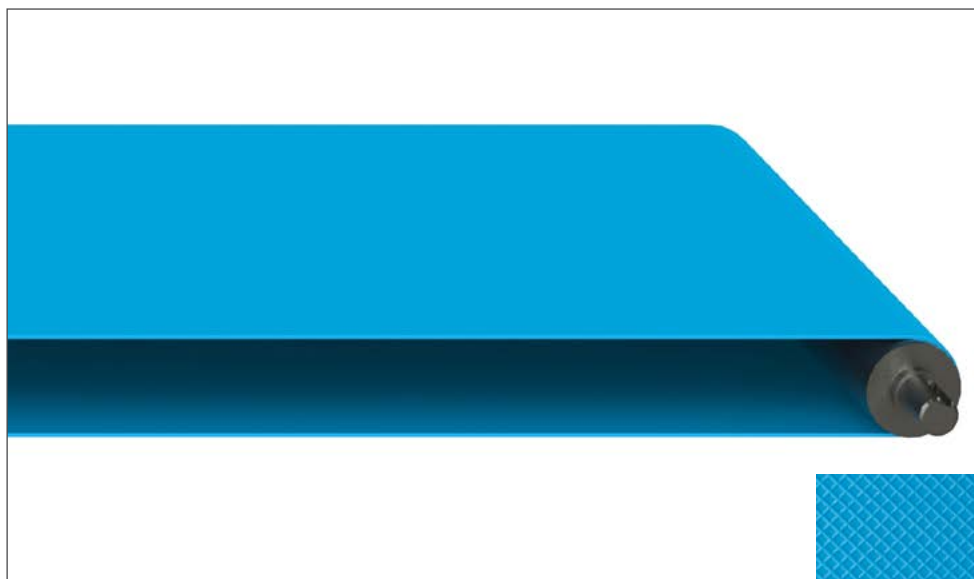


Guide V/FLEX (PVC 60 ShA)

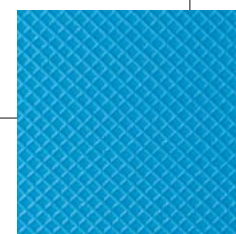
Guide V/FLEX cogged

Belt thickness (mm)	Guide V/FLEX (PVC 60 ShA)					Guide V/FLEX cogged				
	8x5	10x6	13x8	17x11	22x14	8x5	10x6	13x8	17x11	22x14
2	70	80	100	-	-	-	70	90	-	-
2.5	80	100	110	130	-	-	90	100	110	-
3	110	130	140	150	200	-	110	120	130	150
4	160	180	200	210	220	-	160	180	190	200
5	200	210	220	240	250	-	200	210	230	240

DEL/FLEX



Food quality (EC - FDA)



Feature

- Underside smooth or structured.
- Easy to clean.
- Abrasion resistant.
- Resistant to cuts.
- Tear resistant.
- Resistant to chemical attack.
- Flexible.

Application

- Medium load conveying.
- * Abrasive products.
- * Troughed application.

Methods of joining

- Butt welded.
- Overlap in heat press
- Electrode welded.
- Stainless or plastic fasteners (including integral welded fasteners).

STRUCTURAL underside (EM)

- Reduces friction on stainless in wet or fatty environments.
- Increased drive traction.

STANDARD EMBOSSING

Maximum width: 380 mm.



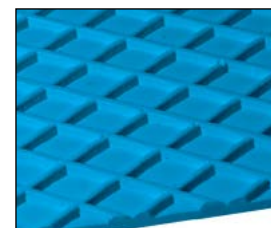
Studs (PI)



Sawtooth (US)



SG3 (SG)



Lattice (LO)

Application of trapezoidal guides, flights and perforations on request.



DEL/FLEX	
Colour	Blue
Material	Polyurethane
Hardness	95 ShA
Upper surface	Smooth
Lower surface	Smooth or embossed (EM)
Traction force	12 daN/cm ² of section at 1% tension
	19 daN/cm ² of section at 2% tension
	25 daN/cm ² of section at 3% tension
Installation tension	1% to 3% depending on conditions
Temperature range	-20°C / +70°C
Coefficient of friction	HDPE 0.25
	Steel 0.5
	Stainless 0.6

Flat Belt Width < 100mm	Conveyor Belt Width ≥ 100mm	Belt Thickness (mm)	Maximum Width (mm)	Minimum Ø Pulley (mm)	Weight (kg/m ²)
DFPB2	DFBB2	2	1850	30	2.5
DFPB2EM	DFBB2EM				
DFPB3	DFBB3	3	1850	70	3.75
DFPB3EM	DFBB3EM				
DFPB4	DFBB4	4	1850	100	5
DFPB4EM	DFBB4EM				
DFPB5	DFBB5	5	1850	140	6.25

DEL/FLEX GUIDE PROFILES

minimum roller Ø (mm)



SOUPLEX Guide (PU 80 ShA)

SOUPLEX guide cogged

Belt thickness (mm)	8x5	10x6	13x8	17x11	22x14	8x5	10x6	13x8	17x11	22x14
2	70	80	100	-	-	-	60	70	-	-
3	90	100	120	170	-	-	75	85	120	-
4	120	140	160	190	-	-	100	110	140	-
5	150	160	200	240	-	-	140	140	160	-

SUPERFLEX Guide (PU 70 ShA)

SUPERFLEX guide cogged

Belt thickness (mm)	8x5	10x6	13x8	17x11	22x14	8x5	10x6	13x8	17x11	22x14
2	60	65	90	135	-	-	-	65	90	-
3	80	85	100	150	-	-	-	80	110	-
4	100	100	115	165	-	-	-	100	120	-
5	140	140	140	185	-	-	-	140	150	-

SUPERFLEX 6x4 mm trapezoidal guide: contact us.

DEL/FLEX



Standard quality



Food quality (EC - FDA)

Characteristics

- Easy to clean.
- Abrasion resistant.
- Resistant to cuts.
- Tear resistant.
- Resistant to chemical attack.
- Flexible.

Application

- Medium load conveying.
- Small pulley diameters.
- Abrasive products.
- Troughed application.

Methods of joining

- Butt welded.
- Overlap in heat press
- Electrode welded.
- Stainless or plastic fasteners (including integral welded fasteners).

STRUCTURAL underside (EM)

- Reduces friction on stainless in wet or fatty environments.
- Increased drive traction.

STANDARD EMBOSSING

Maximum width: 380 mm.



Studs (PI)



Sawtooth (US)



SG3 (SG)



Lattice (LO)

Application of trapezoidal guides, flights and perforations on request.

DEL/FLEX



DEL/FLEX	
Colour	Green or white
Material	Polyurethane
Hardness	93 ShA
Upper surface	Smooth
Lower surface	Smooth or embossed (White EM)
Traction force	10 daN/cm ² of section at 1% tension
	15 daN/cm ² of section at 2% tension
	20 daN/cm ² of section at 3% tension
Installation tension	1% to 3% depending on conditions
Temperature range	-20°C / +70°C
Coefficient of friction	HDPE 0.25
	Steel 0.5
	Stainless 0.6

Flat belt Width < 100mm	Conveyor belt Width ≥ 100mm	Colour	Belt Thickness (mm)	Maximum Width (mm)	Minimum Ø Pulley (mm)	Weight (kg/m ²)
DFPG1.5	DFBG1.5		1.5	1850	20	1.87
DFPW1.5	DFBW1.5					
DFPG2	DFBG2		2	1850	30	2.5
DFPW2	DFBW2					
DFPW2EM	DFBW2EM					
DFPG3	DFBG3		3	1850	70	3.75
DFPW3	DFBW3					
DFPW3EM	DFBW3EM					
DFPG4	DFBG4		4	1850	100	5
DFPW4	DFBW4					
DFPG5	DFBG5		5	1850	140	6.25
DFPW5	DFBW5					

DEL/FLEX GUIDE PROFILES minimum roller Ø (mm)



SOUPLEX Guide (PU 80 ShA)

Belt thickness (mm)	8x5	10x6	13x8	17x11	22x14	8x5	10x6	13x8	17x11	22x14
2	90	100	140	-	-	-	70	80	-	-
3	110	130	180	220	280	-	85	100	140	200
4	130	170	220	260	350	-	100	120	160	220
5	160	200	250	300	400	-	140	150	180	240

SOUPLEX guide cogged

SUPERFLEX Guide (PU 70 ShA)

Belt thickness (mm)	8x5	10x6	13x8	17x11	22x14	8x5	10x6	13x8	17x11	22x14
2	60	65	90	135	-	-	-	65	90	-
3	80	85	100	150	-	-	-	80	110	-
4	100	100	115	165	-	-	-	100	120	-
5	140	140	140	185	-	-	-	140	150	-

SUPERFLEX guide cogged

SUPERFLEX 6x4 mm trapezoidal guide: contact us.

DEL/FLEX REINFORCED



Food quality (EC - FDA)



Lower face reinforced
with polyester fabric.

Feature

- Low elongation.
- Low friction coefficient on conveyor bed.
- Abrasion resistant.
- Resistant to cuts.
- Tear resistant.
- Good tensile strength.

Application

- Medium to heavy load capacity.
- Long centre distances possible.
- Anti-static.

Methods of joining

- Butt welding.
- Electrode welding.
- Stainless fastener.

STANDARD EMBOSSING

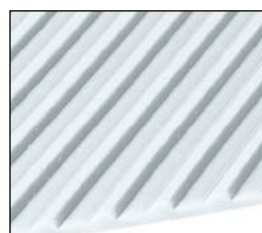
Maximum width: 380 mm.



Studs (PI)



Sawtooth (US)



SG3 (SG)



Lattice (LO)

Application of trapezoidal guides, flights and perforations on request.



DEL/FLEX REINFORCED

DEL/FLEX reinforced	
Colour	White
Material	Polyurethane
Hardness	93 ShA
Upper surface	Smooth
Lower surface	Polyester fabric
Traction force	7 daN/cm of width at 1% tension
	17.5 daN/cm of width at 2% tension
Installation tension	1% to 2% depending on conditions
Temperature range	-20°C / +80°C
Coefficient of friction	HDPE 0.25
	Steel 0.35
	Stainless 0.35

Flat Belt Width < 100mm	Conveyor Belt Width ≥ 100mm	Belt Thickness (mm)	Maximum Width (mm)	Minimum Ø Pulley (mm)	Weight (kg/m ²)
DFPW3RF	DFBW3RF	3	1850	80	3.6

REINFORCED DEL/FLEX BELTS

Ø minimum roller Ø (mm)



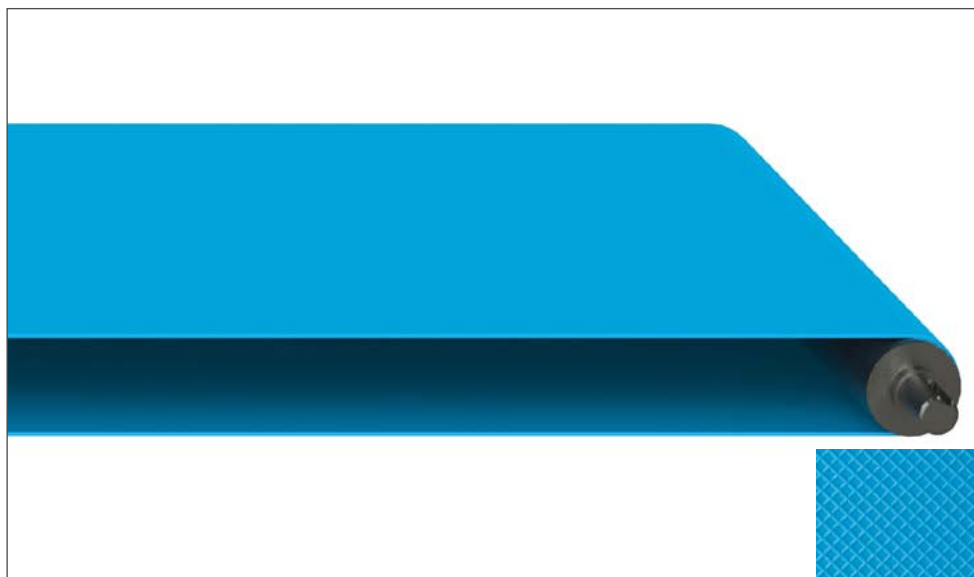
 SUPERFLEX Guide (PU 70 ShA)

 SUPERFLEX guide cogged

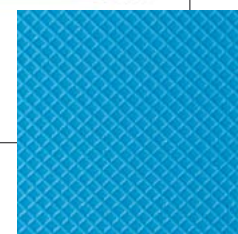
Belt thickness (mm)	8x5	10x6	13x8	17x11	22x14	8x5	10x6	13x8	17x11	22x14
3	90	100	120	160	-	-	-	100	130	-

SUPERFLEX 6x4 mm trapezoidal Guide: contact us.

SOUPLEX



Food quality (EC - FDA)



Feature

- Easy to clean.
- Abrasion resistant.
- Resistant to cuts.
- Tear resistant.
- Resistant to chemical attacks.
- High friction.
- Very flexible.
- Good elasticity.

Application

- Light load conveying.
- Short conveying distances.
- Small pulley Ø.

Methods of joining

- Butt welding.
- Overlap in heat press.
- Stainless fasteners.

STRUCTURAL underside (EM)

- Reduces friction on stainless in wet or fatty environments.
- Increased drive traction.

STANDARD EMBOSSING

Maximum width: 380 mm.



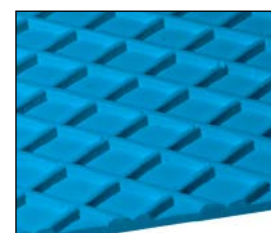
Studs (PI)



Sawtooth (US)



SG3 (SG)



Lattice (LO)

Application of trapezoidal guides, flights and perforations on request.



SOUPLEX

SOUPLEX	
Colour	Blue
Material	Polyurethane
Hardness	85 ShA
Upper surface	Smooth
Lower surface	Smooth or embossed (EM)
Traction force	4 daN/cm ² of section at 2% tension
	6 daN/cm ² of section at 3% de tension
	8 daN/cm ² of section at 4% de tension
Installation tension	3% to 5% depending on conditions
Temperature range	-20°C / +60°C
Coefficient of friction	HDPE 0.35
	Steel 0.6
	Stainless 0.7

Flat Belt Width < 100mm	Conveyor Belt Width ≥ 100mm	Belt Thickness (mm)	Maximum Width (mm)	Minimum Ø Pulley (mm)	Weight (kg/m ²)
SXPB2	SXBB2	2	1850	20	2.5
SXPB2EM	SXBB2EM				
SXPB3	SXBB3	3	1850	40	3.75

SOUPLEX GUIDE PROFILES

minimum roller Ø (mm)



 **SOUPLEX Guide (PU 80 ShA)**

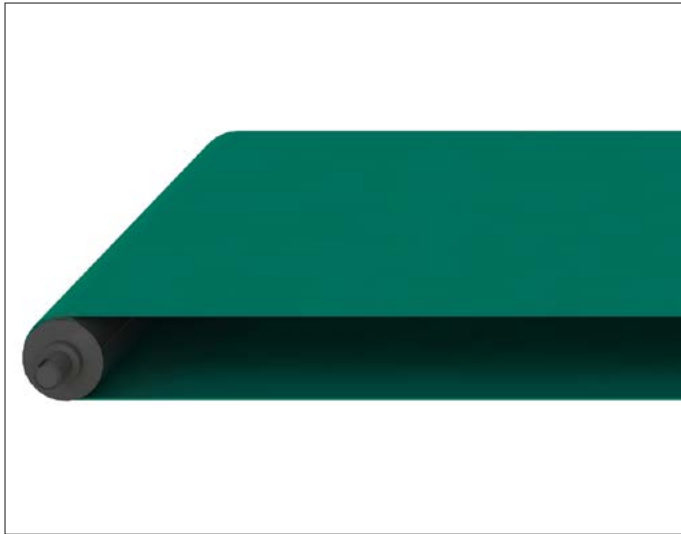
Belt thickness (mm)	SOUPLEX Guide (PU 80 ShA)					SOUPLEX guide cogged				
	8x5	10x6	13x8	17x11	22x14	8x5	10x6	13x8	17x11	22x14
2	60	80	100	-	-	-	-	60	-	-
3	70	90	110	160	180	-	-	70	100	140

 **SUPERFLEX Guide (PU 70 ShA)**

Belt thickness (mm)	SUPERFLEX Guide (PU 70 ShA)					SUPERFLEX guide cogged				
	8x5	10x6	13x8	17x11	22x14	8x5	10x6	13x8	17x11	22x14
2	40	60	80	-	-	-	-	55	-	-
3	60	75	90	140	-	-	-	65	85	-

SUPERFLEX 6x4 mm trapezoidal guide: contact us.

SOUPLEX



Standard quality



Food quality (EC - FDA)

Feature

- Easy to clean.
- Abrasion resistant.
- Resistant to cuts.
- Tear resistant.
- Resistant to chemical attack.
- High friction.
- Very flexible.
- Good elasticity.

Application

- Light load conveying.
- Short conveying distances.
- Small pulley \emptyset .

Methods of joining

- Butt welding.
- Overlap in heat press.
- Stainless fasteners.

Application of trapezoidal guides, flights and perforations on request.

STANDARD EMBOSSING

Maximum width: 380 mm.



Studs (PI)



Sawtooth (US)



SG3 (SG)



Lattice (LO)

SOUPLEX



SOUPLEX	
Colour	Green or White
Material	Polyurethane
Hardness	85 ShA
Upper surface	Smooth
Lower surface	Smooth
Traction force	4 daN/cm ² of section at 2% tension
	6 daN/cm ² of section at 3% tension
	8 daN/cm ² of section at 4% tension
Installation tension	3% to 5% depending on conditions
Temperature range	-20°C / +60°C
Coefficient of friction	HDPE 0.35
	Steel 0.6
	Stainless 0.7

Flat Belt Width < 100mm	Conveyor Belt Width ≥ 100mm	Colour	Belt Thickness (mm)	Maximum Width (mm)	Minimum Ø Pulley (mm)	Weight (kg/m ²)
SXPG2	SXBG2		2	1850	20	2.5
SXPW2	SXBW2					
SXPG3	SXBG3		3	1850	40	3.75
SXPW3	SXBW3					
SXPG4	SXBG4		4	1850	60	5
SXPW4	SXBW4					

SOUPLEX GUIDE PROFILES

minimum roller Ø (mm)



SOUPLEX Guide (PU 80 ShA)

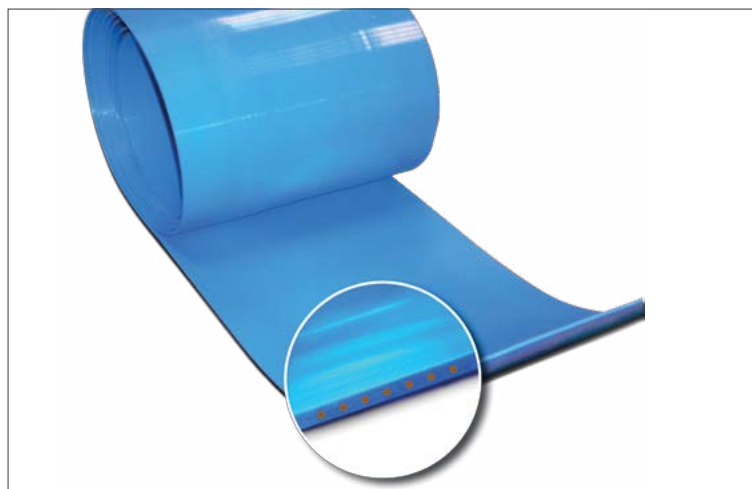
Belt thickness (mm)	SOUPLEX Guide (PU 80 ShA)					SOUPLEX guide coggèd				
	8x5	10x6	13x8	17x11	22x14	8x5	10x6	13x8	17x11	22x14
2	80	90	130	-	-	-	55	65	-	-
3	100	120	160	200	260	-	70	80	120	180
4	120	140	190	220	280	-	85	100	140	200

SUPERFLEX Guide (PU 70 ShA)

Belt thickness (mm)	SUPERFLEX Guide (PU 70 ShA)					SUPERFLEX guide coggèd				
	8x5	10x6	13x8	17x11	22x14	8x5	10x6	13x8	17x11	22x14
2	40	60	80	-	-	-	-	55	-	-
3	60	75	90	140	-	-	-	65	85	-
4	80	90	110	160	-	-	-	80	100	-

SUPERFLEX 6x4 mm trapezoidal guide: contact us.

ARAMIDE REINFORCED FLAT BELT



Food quality (EC - FDA)

Features

- No elongation due to Aramide cables.
- High impact resistance.
- High resistance to abrasion and cuts.

Application

- Small pulley diameters.
- Medium to heavy load capacity.
- Abrasive products.

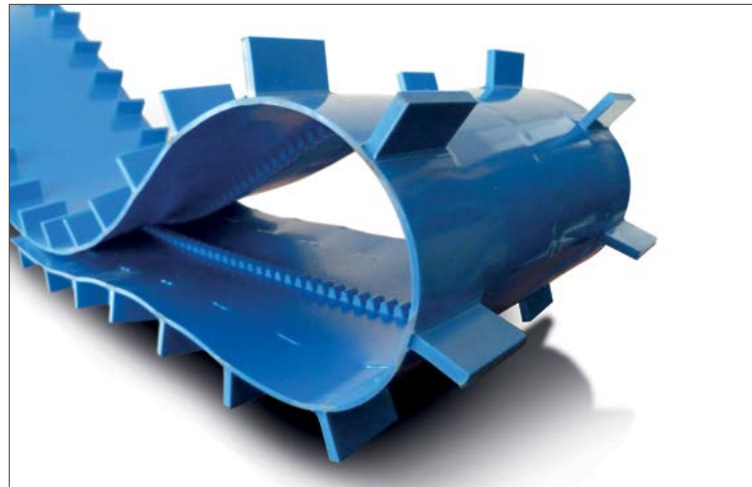
Method of joining: Joined in our workshops and supplied endless.

FLATBELT		
Colour	Blue	
Material	Polyurethane	
Hardness	95 ShA	
Upper surface	Smooth	
Lower surface	Smooth	
Traction force	75 daN per 100mm width at 0.5% tension	
Installation tension	0.4% to 0.6%	
Temperature range	-20°C / +70°C	
Coefficient of friction	HDPE	0.25
	Steel	0.5
	Stainless	0.6

Flat Belt Width < 100mm	Conveyor Belt Width ≥ 100mm	Belt Thickness (mm)	Maximum Width (mm)	Minimum Ø Pulley (mm)	Weight (kg/m ²)
FBPB100R2.3	FBBB100R2.3	2.3	350	45	2.9



PROBELT ARAMIDE REINFORCED



Food quality (EC - FDA)

Features

- No elongation due to Aramide cords.
- High impact resistance.
- High resistance to abrasion and cuts.
- Excellent guidance due to the moulded guide on the reverse

Application

- Small pulley diameters.
- Medium to heavy load capacity.
- Abrasive products.
- Resistant to Lateral forces.

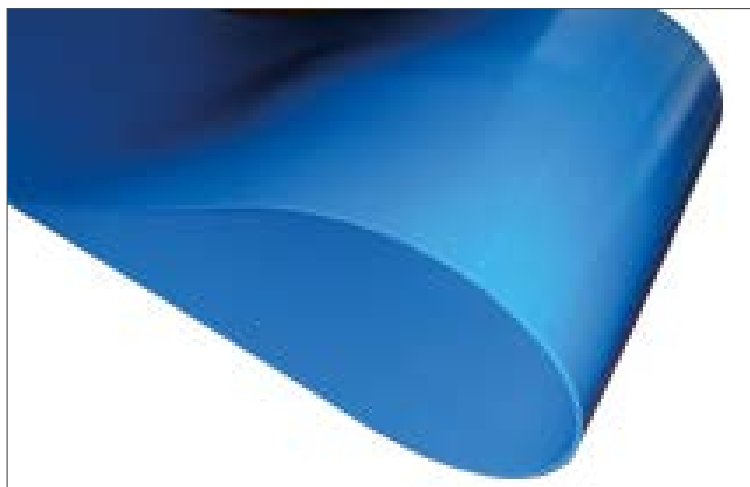
Method of joining: Joined in our workshops and supplied endless.

PROBELT		
Colour	Blue	
Material	Polyurethane	
Hardness	95 ShA	
Upper surface	Smooth	
Lower surface	Smooth + 10x6 notched guide moulded centrally	
Traction force	75 daN per 100mm of width at 0.5% tension	
Installation tension	0.4% to 0.6%	
Temperature range	-20°C / +70°C	
Coefficient of friction	HDPE	0.25
	Steel	0.5
	Stainless	0.6

Moulded guide 10x6mm rectangular cross section.

Flat belt Width < 100mm	Conveyor Belt Width ≥ 100mm	Belt Thickness (mm)	Maximum Width (mm)	Minimum Ø Pulley (mm)	Weight (kg/m ²)
PBPB110R2.3	PBBB110R2.3	2.3	350	50	2.9

ELASTOBELT



Food quality (EC - FDA)
Standard embossing possible on the upper surface

Feature

- High grip.
- Very flexible.
- High resistance to impact and abrasion.
- Very good elasticity, ideal for conveyors without tensioning system.
- Small pulley diameters.

Application

- Pulley linings.
- Sleeve.
- Bibs, scrapers, protection...
- Coating on flat and trapezoidal straps.
- Conveying very low loads over short distances.

Joining method: Butt welded or mechanical fasteners.

ELASTOBELT			
Colour		Blue	Blue
Material		Polyurethane	
Hardness		80 ShA	70 ShA
Upper surface		Smooth	Smooth
Lower surface		Smooth	Smooth
Traction force		4.5 daN/cm ² of section at 3% tension	2.7 daN/cm ² of section at 3% tension
		5.7 daN/cm ² of section at 4% tension	3.7 daN/cm ² of section at 4% tension
		8.7 daN/cm ² of section at 6% tension	5.8 daN/cm ² of section at 6% tension
Installation tension		3% to 6% depending on conditions	
Temperature range		-20°C / +60°C	-20°C / +60°C
Coefficient of friction	HDPE	0.35	0.35
	Steel	0.6	0.6
	Stainless	0.7	0.7

Flat Belt Width < 100mm	Conveyor Belt Width ≥ 100mm	Belt Thickness (mm)	Maximum Width (mm)	Minimum Ø Pulley (mm)	Weight (kg/m ²)
EB70PB1.6	EB70BB1.6	1.6	360	12	2
EB80PB1.6	EB80BB1.6	1.6	360	18	2
EB80PB3	EBO80BB3	3	360	30	3.75



TOTALGRIP



Food quality (EC - FDA)
Standard embossing possible on the upper surface

Feature

- High grip.
- Very flexible.
- High impact resistance.
- High abrasion resistance.
- Very good elasticity, ideal for conveyors without tensioning system.

Application

- Pulley linings.
- Sleeves.
- Bibs, scrapers, protection...
- Coating on flat and trapezoidal straps.
- Conveying very low loads over short distances.

Joining method: Butt welded or mechanical fasteners.

TOTALGRIP	
Colour	Translucent
Material	Polyurethane
Hardness	70 ShA
Upper surface	Smooth
Lower surface	Smooth
Traction force	2.7 daN/cm ² of section at 3% tension
	3.7 daN/cm ² of section at 4% tension
	5.8 daN/cm ² of section at 6% tension
Installation tension	3% to 6% depending on conditions
Temperature range	-20°C / +60°C
Coefficient of friction	HDPE 0.35
	Steel 0.6
	Stainless 0.7

Flat Belt Width < 100mm	Conveyor belt Width ≥ 100mm	Belt thickness (mm)	Maximum Width (mm)	Minimum Ø Pulley (mm)	Width (kg/m ²)
TLPT1.5	TLBT1.5	1.5	360	15	1.9
TLPT3	TLBT3	3	360	25	3.75
TLPT4	TLBT4	4	360	40	5