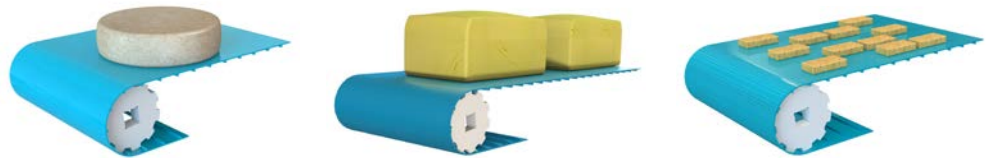


# DEL/DRIVE® 50



**“THE IDEAL ALTERNATIVE TO MODULAR BELTS”**



	DEL/DRIVE® 50	DEL/DRIVE® 50H	DEL/DRIVE® 50EMLT
Reference	DDB50B3	DDB50B3H	DDB50B3EMLT
<b>Material</b>	<b>Polyurethane</b>	<b>Polyester elastomer</b>	<b>Polyurethane</b>
Colour	Blue	Blue	Blue
Top surface	<b>Smooth</b>	<b>Smooth</b>	<b>Embossed</b>
Hardness	95 ShA	55 ShD	92 ShA
Pitch* (mm)	50	50	50
Thickness (mm)	3	3	3
Overall thickness (mm)	8.6	8.3	8.6
Maximum width (mm)	1 850	1 850	1 850
Weights	4.8 kg/m <sup>2</sup>	4.4 kg/m <sup>2</sup>	4.8 kg/m <sup>2</sup>
Min. pulley diameter (mm)	95	128	95
Min. pulley diameter - back flex (mm)	100	150	80
Temperature range	-20°C to +60°C	-20°C to +80°C	-30°C to +50°C
Traction force at 2,5% elongation for 100 mm width	65 daN	160 daN	35 daN
<b>Friction coefficient</b>			
On HDPE bed	0.2	0.15	0.25
On stainless steel bed	0.52	0.45	0.6

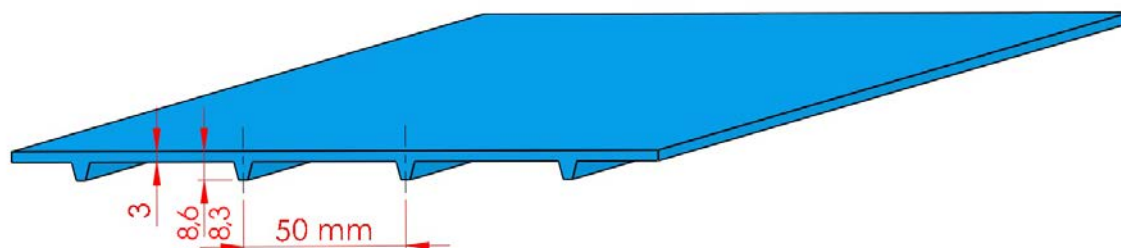
\*Exact value : Contact us

# DEL/DRIVE® 50



The DEL/DRIVE® positive drive belt meets the **most stringent standards of hygiene** and is **the ideal alternative to conventional modular belts**. It replaces a modular belt without any modifications. It is either driven on a sprocket or a motorized drum.

The DEL/DRIVE® belt is installed **without tension**, thereby reducing stress on the conveyor's mechanical components: shafts, anti-friction bearings, roller bearing, etc. DEL/DRIVE® can be configured with flights, sidewalls or other profiles (see page 18).



The DEL/DRIVE® comes in several versions to meet all needs:

**The DEL/DRIVE® 50** belt in polyurethane is both flexible and has high tensile strength. It is the ideal solution for the conveyance of light to medium-weight loads.

**The DEL/DRIVE® 50AM** belt has the same characteristics as the DEL/DRIVE® 50 belt plus an infused antimicrobial treatment. DEL/DRIVE® 50AM improves food safety by inhibiting the proliferation of bacteria.

This prevents the contamination of transported products. A further benefit is the reduction of odours and cleaning cycles.

**The DEL/DRIVE® 50AMEM** belt has an infused antimicrobial treatment and an embossed top surface that reduces adherence of the products on the belt.

**The DEL/DRIVE® 50H** belt in polyester elastomer is recommended for medium to heavy loads and can be used with long centre-to-centre distances. In certain cases, its high tensile strength and low friction coefficient permits a build-up of transported products. It can withstand higher peak temperatures, depending on the load.

**The DEL/DRIVE® 50EMLT** belt is specially designed to operate in very low ambient temperatures. Its embossed top surface facilitates the conveyance of frozen products.

**The DEL/DRIVE® 50/25** belt has 50mm drive teeth on one face, and 25mm drive teeth on the other allowing one side to drive and the other to act as low flights for increased grip.

# DEL/DRIVE® 50

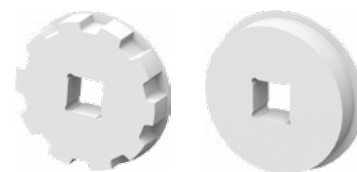


## SPROCKETS AND IDLER WHEELS



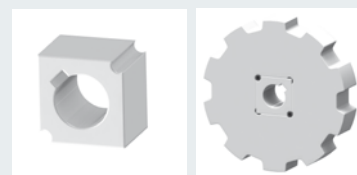
REFERENCE	PRODUCT	MATERIAL	NUMBER OF TEETH	OUTER DIAMETER	SQUARE BORE	WIDTH (mm)
P50WUN06	Sprocket	HDPE	6	95	40	32
R50WUN06	Wheel	HDPE	-	83	40	32
P50WUN08	Sprocket	HDPE	8	128	40	32
R50WUN08	Wheel	HDPE	-	116	40	32
P50WUN10	Sprocket	HDPE	10	161	40	32
R50WUN10	Wheel	HDPE	-	149	40	32
P50WUN12	Sprocket	HDPE	12	193	40	32
R50WUN12	Wheel	HDPE	-	181	40	32

Flanged sprockets and wheels are available on request.

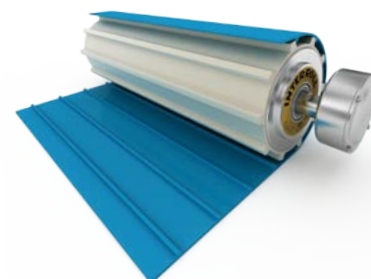
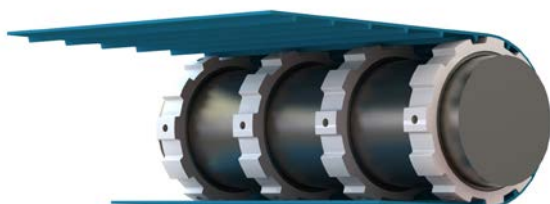


The standard sprockets we offer have a square bore for a 40x40 mm drive shaft.

**They can be mounted on other shafts with special adapters.**  
Please enquire for any other dimensions of round or square shaft.



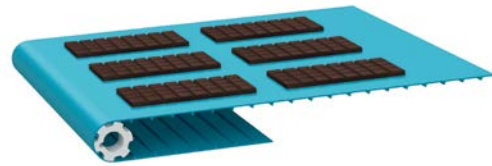
On a smooth driving drum, sprockets can be mounted on bushings or a driving drum with profiled polyurethane lagging.



# DEL/DRIVE® 25



**"POSITIVE DRIVE ON SMALL PULLEY DIAMETERS"**



		DEL/DRIVE® 25	
Reference		DDB25B2	DDB25B2.8
<b>Material</b>		<b>Polyurethane</b>	
Colour		Blue	Blue
Top surface		<b>Smooth</b>	<b>Smooth</b>
Hardness		93 ShA	93 ShA
Pitch (mm)		25.3	25.3
Thickness (mm)		2	2.8
Overall thickness (mm)		6	7
Max. width (mm)		<b>1 850</b>	<b>1 850</b>
Weights		3 kg/m <sup>2</sup>	4 kg/m <sup>2</sup>
Min. pulley diameter (mm)		48	56.7
Min. pulley diameter - back flex (mm)		50	60
Temperature range		-20°C to +60°C	
Traction force at 2% elongation		25 daN for a width of 100 mm	30 daN for a width of 100 mm
<b>Friction coefficient</b>			
On HDPE bed		0.22	
On stainless steel bed		0.55	



The DEL/DRIVE® 25 belt is flexible, light with a small pitch and thickness for smaller diameter sprockets. It thus reduces the space requirements of conveyors and facilitates the transfer of transported products.



## DRIVE SPROCKETS



REFERENCE	MATERIAL	NUMBER OF TEETH	OUTER DIAMETER (mm)	BORE (mm)		WIDTH (mm)
				square bore	round bore	
P25WUN06	HDPE	6	48	-	25	25
P25WUN07	HDPE	7	56.7	-	25	25
P25WUN08	HDPE	8	65	-	25	25
P25WUN10	HDPE	10	81	40	-	25
P25WUN12	HDPE	12	97.5	40	-	25