

| |
|---|
| Hardness 100 ShA - 55 ShD |
| Pretension 0.5 - 2% |
| Temperature range -30°C/+90°C |
| Friction coefficient HDPE : 0.15 - 0.2 Steel : 0.35 - 0.4 Stainless steel : 0.5 |
| Roll length 30 m |



solid

DEL/ROC black



cogged

| Reference | Traction force (daN) | Primitive pulley ϕ (mm) recommended | Primitive pulley ϕ (mm) mini |
|-----------|----------------------|--|-----------------------------------|
| DRVN10 | 22 | 120 | 100 |
| DRVN13 | 40 | 160 | 140 |
| DRVN17 | 74 | 220 | 200 |
| DRVN22 | 122 | 280 | 250 |

| Dimension (mm) | Pretension |
|----------------|------------|
| 10x6 Z | 2% |
| 13x8 A | 2% |
| 17x11 B | 2% |
| 22x14 C | 2% |

| Reference | Traction force (daN) | Primitive pulley ϕ (mm) recommended | Primitive pulley ϕ (mm) mini |
|-----------|----------------------|--|-----------------------------------|
| DRVNCR10 | 15 | 100 | 80 |
| DRVNCR13 | 28 | 120 | 100 |
| DRVNCR17 | 51 | 160 | 140 |
| DRVNCR22 | 85 | 240 | 190 |



solid

SUPERGRIP coating



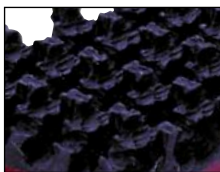
cogged

| Reference | Traction force (daN) | Primitive pulley ϕ (mm) recommended | Primitive pulley ϕ (mm) mini |
|-----------|----------------------|--|-----------------------------------|
| DRVN10NA | 22 | 120 | 100 |
| DRVN13NA | 40 | 160 | 140 |
| DRVN17NA | 74 | 220 | 200 |
| DRVN22NA | 122 | 280 | 250 |

| Dimension (mm) | Pretension |
|----------------|------------|
| 10x6 Z | 2% |
| 13x8 A | 2% |
| 17x11 B | 2% |
| 22x14 C | 2% |

| Reference | Traction force (daN) | Primitive pulley ϕ (mm) recommended | Primitive pulley ϕ (mm) mini |
|------------|----------------------|--|-----------------------------------|
| DRVNCR10NA | 15 | 100 | 80 |
| DRVNCR13NA | 28 | 120 | 100 |
| DRVNCR17NA | 51 | 160 | 140 |
| DRVNCR22NA | 85 | 240 | 190 |

other coatings *



RUBBER SUPERGRIP
(code NC)

- Good grip.
- Resistance to abrasion.
- Resistance to temperature.



POLYESTER FELT
(code FP)

- Conveying with accumulation of fragile products.
- Low friction coefficient.



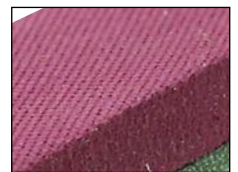
ARAMID FELT
(code FA)

- High resistance to temperature.



FOAM
(code MS)

- Low Hardness.
- Different thicknesses available.



LINATECH
(code LI)

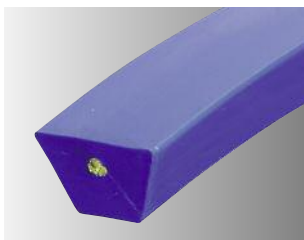
- High resistance to abrasion.
- High grip.
- Rough surface, thickness 2 to 10 mm.



*Reference : complete the belt reference with the coating reference.

DEL/SAN reinforced V belts

| |
|--|
| Hardness 95 ShA |
| Pretension see table |
| Temperature range -20°C/+70°C |
| Friction coefficient HDPE : 0.20 Steel : 0.4 Stainless steel : 0.5 |
| Roll length 30 m |



solid



cogged

DEL/SAN blue Aramid reinforced

| Reference | Traction force (daN) | Primitive pulley ϕ (mm) recommended | mini |
|-----------|----------------------|--|------|
| DSVBAR13 | 35 | 150 | 130 |
| DSVBAR17 | 60 | 180 | 160 |
| DSVBAR22 | 95 | 260 | 240 |

| Dimension (mm) | Pretension |
|----------------|------------|
| 13x8 A | 1% |
| 17x11 B | 1.5% |
| 22x14 C | 1.5% |

| Reference | Traction force (daN) | Primitive pulley ϕ (mm) recommended | mini |
|-----------|----------------------|--|------|
| DSVBAC13 | 35 | 120 | 100 |
| DSVBAC17 | 60 | 150 | 130 |
| DSVBAC22 | 95 | 210 | 180 |



solid



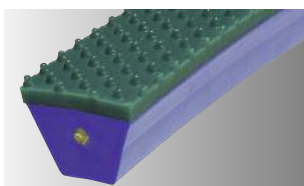
cogged

SUPERGRIP coating

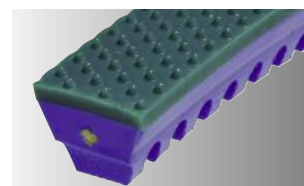
| Reference | Traction force (daN) | Primitive pulley ϕ (mm) recommended | mini |
|------------|----------------------|--|------|
| DSVBAR13NA | 35 | 150 | 130 |
| DSVBAR17NA | 60 | 180 | 160 |
| DSVBAR22NA | 95 | 260 | 240 |

| Dimension (mm) | Pretension |
|----------------|------------|
| 13x8 A | 1% |
| 17x11 B | 1.5% |
| 22x14 C | 1.5% |

| Reference | Traction force (daN) | Primitive pulley ϕ (mm) recommended | mini |
|------------|----------------------|--|------|
| DSVBAC13NA | 35 | 120 | 100 |
| DSVBAC17NA | 60 | 150 | 130 |
| DSVBAC22NA | 95 | 210 | 180 |



solid



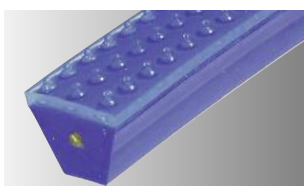
cogged

SOUPLEX 85 ShA surface

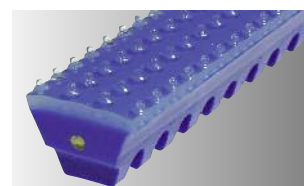
| Reference | Traction force (daN) | Primitive pulley ϕ (mm) recommended | mini |
|-------------|----------------------|--|------|
| DSVBAR13SPI | 35 | 170 | 150 |
| DSVBAR17SPI | 60 | 200 | 180 |
| DSVBAR22SPI | 95 | 280 | 260 |

| Dimension (mm) | Pretension |
|----------------|------------|
| 13x8 A | 1% |
| 17x11 B | 1.5% |
| 22x14 C | 1.5% |

| Reference | Traction force (daN) | Primitive pulley ϕ (mm) recommended | mini |
|-------------|----------------------|--|------|
| DSVBAC13SPI | 35 | 140 | 120 |
| DSVBAC17SPI | 60 | 170 | 150 |
| DSVBAC22SPI | 95 | 230 | 200 |



solid



cogged

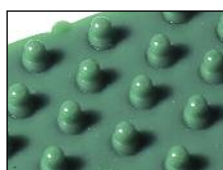
TOTALGRIP 70 ShA surface

| Reference | Traction force (daN) | Primitive pulley ϕ (mm) recommended | mini |
|-------------|----------------------|--|------|
| DSVBAR13TPI | 35 | 160 | 140 |
| DSVBAR17TPI | 60 | 190 | 170 |
| DSVBAR22TPI | 95 | 270 | 250 |

| Dimension (mm) | Pretension |
|----------------|------------|
| 13x8 A | 1% |
| 17x11 B | 1.5% |
| 22x14 C | 1.5% |

| Reference | Traction force (daN) | Primitive pulley ϕ (mm) recommended | mini |
|-------------|----------------------|--|------|
| DSVBAC13TPI | 35 | 130 | 110 |
| DSVBAC17TPI | 60 | 160 | 140 |
| DSVBAC22TPI | 95 | 220 | 190 |

other surfaces *

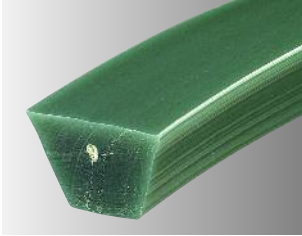


| Reference | SMOOTH | STUDED | SAW-TOOTH | SG3 | TRELLIS |
|-------------------------|--------|--------|-----------|-----|---------|
| Souplex 85 ShA | SLI | SPI | SUS | SSG | SLO |
| Totalgrip 70 ShA | TLI | TPI | TUS | TSG | TLO |

*Reference : complete the belt reference with the coating reference.

H15/H16 reinforced V belts

| |
|--|
| Hardness 92 ShA |
| Prefension see table |
| Temperature range -20°C/+70°C |
| Friction coefficient HDPE : 0.25 Steel : 0.45 Stainless steel : 0.55 |
| Roll length 30 m |



H15
solid



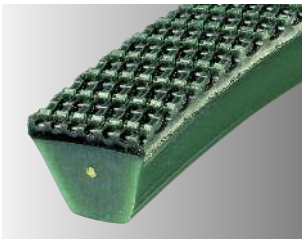
H16
cogged

green Aramid reinforced

| Reference | Traction force (daN) | Primitive pulley ϕ (mm) recommended | Dimension (mm) | Pretension |
|-----------|----------------------|--|----------------|------------|
| H15GAR10 | 15 | 110 | 10x6 Z | 1% |
| H15GAR13 | 30 | 140 | 13x8 A | 1% |
| H15GAR17 | 50 | 170 | 17x11 B | 1.5% |
| H15GAR22 | 75 | 250 | 22x14 C | 1.5% |
| H15GAR32 | 140 | 350 | 32x19 D | 1.5% |

| Reference | Traction force (daN) | Primitive pulley ϕ (mm) recommended | Dimension (mm) | Pretension |
|-----------|----------------------|--|----------------|------------|
| H16GAC10 | 15 | 80 | 10x6 Z | 1% |
| H16GAC13 | 30 | 100 | 13x8 A | 1% |
| H16GAC17 | 50 | 130 | 17x11 B | 1.5% |
| H16GAC22 | 75 | 180 | 22x14 C | 1.5% |
| H16GAC32 | 140 | 300 | 32x19 D | 1.5% |

| Reference | Traction force (daN) | Primitive pulley ϕ (mm) recommended | Dimension (mm) | Pretension |
|------------|----------------------|--|----------------|------------|
| H15GAR10NA | 15 | 110 | 10x6 Z | 1% |
| H15GAR13NA | 30 | 140 | 13x8 A | 1% |
| H15GAR17NA | 50 | 170 | 17x11 B | 1.5% |
| H15GAR22NA | 75 | 250 | 22x14 C | 1.5% |
| H15GAR32NA | 140 | 350 | 32x19 D | 1.5% |



H15
solid

SUPERGRIP coating



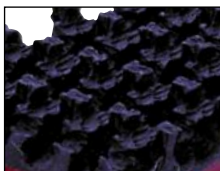
H16
cogged

| Reference | Traction force (daN) | Primitive pulley ϕ (mm) recommended | Dimension (mm) | Pretension |
|------------|----------------------|--|----------------|------------|
| H15GAR10NA | 15 | 110 | 10x6 Z | 1% |
| H15GAR13NA | 30 | 140 | 13x8 A | 1% |
| H15GAR17NA | 50 | 170 | 17x11 B | 1.5% |
| H15GAR22NA | 75 | 250 | 22x14 C | 1.5% |
| H15GAR32NA | 140 | 350 | 32x19 D | 1.5% |

| Reference | Traction force (daN) | Primitive pulley ϕ (mm) recommended | Dimension (mm) | Pretension |
|------------|----------------------|--|----------------|------------|
| H16GAC10NA | 15 | 80 | 10x6 Z | 1% |
| H16GAC13NA | 30 | 100 | 13x8 A | 1% |
| H16GAC17NA | 50 | 130 | 17x11 B | 1.5% |
| H16GAC22NA | 75 | 180 | 22x14 C | 1.5% |
| H16GAC32NA | 140 | 300 | 32x19 D | 1.5% |

| Reference | Traction force (daN) | Primitive pulley ϕ (mm) recommended | Dimension (mm) | Pretension |
|------------|----------------------|--|----------------|------------|
| H16GAC10NA | 15 | 80 | 10x6 Z | 1% |
| H16GAC13NA | 30 | 100 | 13x8 A | 1% |
| H16GAC17NA | 50 | 130 | 17x11 B | 1.5% |
| H16GAC22NA | 75 | 180 | 22x14 C | 1.5% |
| H16GAC32NA | 140 | 300 | 32x19 D | 1.5% |

other coatings*



RUBBER SUPERGRIP
(code NC)



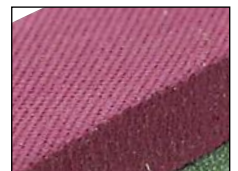
POLYESTER FELT
(code FP)



ARAMID FELT
(code FA)



FOAM
(code MS)

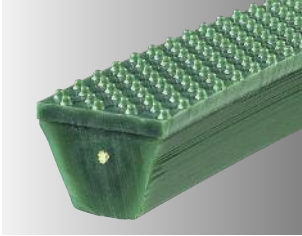


LINATECH
(code LI)



*Reference : complete the belt reference with the coating reference.

H15/H16 reinforced V belts



H15 solid

SOUPLEX 85 ShA surface



H16 cogged

| Reference | Traction force (daN) | Primitive pulley ϕ (mm) recommended | mini |
|-------------|----------------------|--|------|
| H15GAR10SPI | 15 | 130 | 110 |
| H15GAR13SPI | 30 | 160 | 130 |
| H15GAR17SPI | 50 | 190 | 170 |
| H15GAR22SPI | 75 | 270 | 250 |
| H15GAR32SPI | 140 | 370 | 320 |

| Dimension (mm) | Pretension |
|----------------|------------|
| 10x6 Z | 1% |
| 13x8 A | 1% |
| 17x11 B | 1.5% |
| 22x14 C | 1.5% |
| 32x19 D | 1.5% |

| Reference | Traction force (daN) | Primitive pulley ϕ (mm) recommended | mini |
|-------------|----------------------|--|------|
| H16GAC10SPI | 15 | 100 | 80 |
| H16GAC13SPI | 30 | 120 | 100 |
| H16GAC17SPI | 50 | 150 | 130 |
| H16GAC22SPI | 75 | 200 | 170 |
| H16GAC32SPI | 140 | 320 | 270 |



H15 solid

TOTALGRIP 70 ShA surface



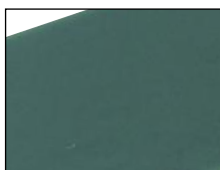
H16 cogged

| Reference | Traction force (daN) | Primitive pulley ϕ (mm) recommended | mini |
|-------------|----------------------|--|------|
| H15GAR10TPI | 15 | 120 | 100 |
| H15GAR13TPI | 30 | 150 | 120 |
| H15GAR17TPI | 50 | 180 | 160 |
| H15GAR22TPI | 75 | 260 | 240 |
| H15GAR32TPI | 140 | 360 | 310 |

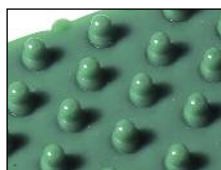
| Dimension (mm) | Pretension |
|----------------|------------|
| 10x6 Z | 1% |
| 13x8 A | 1% |
| 17x11 B | 1.5% |
| 22x14 C | 1.5% |
| 32x19 D | 1.5% |

| Reference | Traction force (daN) | Primitive pulley ϕ (mm) recommended | mini |
|-------------|----------------------|--|------|
| H16GAC10TPI | 15 | 90 | 75 |
| H16GAC13TPI | 30 | 110 | 80 |
| H16GAC17TPI | 50 | 140 | 120 |
| H16GAC22TPI | 75 | 190 | 160 |
| H16GAC32TPI | 140 | 310 | 260 |

other surfaces *



SMOOTH



STUDED



SAW-TOOTH



SG3



TRELLIS

Reference

Souplex 85 ShA

Totalgrip 70 ShA

SLI

TLI

SPI

TPI

SUS

TUS

SSG

TSG

SLO

TLO

*Reference : complete the belt reference with the coating reference.

| |
|--|
| Hardness 90 ShA |
| Pretension 3 - 6% |
| Temperature range -20°C/+70°C |
| Friction coefficient HDPE : 0.25 Steel : 0.5 Stainless steel : 0.6 |
| Roll length 30 m |



solid

| Reference | Traction force (daN) | Primitive pulley ϕ (mm) recommended | Primitive pulley ϕ (mm) mini |
|-----------|----------------------|--|-----------------------------------|
| DFVR8 | 7 | 55 | 50 |
| DFVR10 | 11 | 80 | 65 |
| DFVR13 | 20 | 100 | 80 |
| DFVR17 | 36 | 150 | 130 |
| DFVR22 | 60 | 220 | 180 |
| DFVR32 | 118 | 300 | 250 |

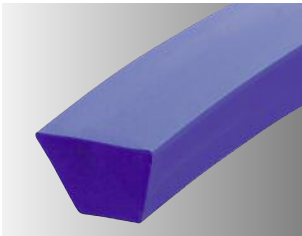


cogged

DEL/FLEX red

| Dimension (mm) | Pretension |
|----------------|------------|
| 8x5 | 5% |
| 10x6 Z | 5% |
| 13x8 A | 5% |
| 17x11 B | 5% |
| 22x14 C | 5% |
| 32x19 D | 5% |

| Reference | Traction force (daN) | Primitive pulley ϕ (mm) recommended | Primitive pulley ϕ (mm) mini |
|-----------|----------------------|--|-----------------------------------|
| - | - | - | - |
| DFVRCR10 | 7 | 60 | 50 |
| DFVRCR13 | 14 | 80 | 60 |
| DFVRCR17 | 25 | 110 | 90 |
| DFVRCR22 | 42 | 150 | 120 |
| DFVRCR32 | 82 | 220 | 180 |



solid

| Reference | Traction force (daN) | Primitive pulley ϕ (mm) recommended | Primitive pulley ϕ (mm) mini |
|-----------|----------------------|--|-----------------------------------|
| DFVB8 | 7 | 55 | 50 |
| DFVB10 | 11 | 80 | 65 |
| DFVB13 | 20 | 100 | 80 |

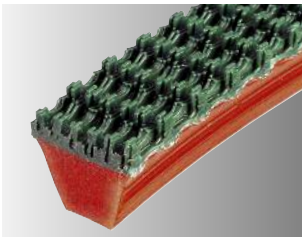
DEL/FLEX blue

| Dimension (mm) | Pretension |
|----------------|------------|
| 8x5 | 5% |
| 10x6 Z | 5% |
| 13x8 A | 5% |



cogged

| Reference | Traction force (daN) | Primitive pulley ϕ (mm) recommended | Primitive pulley ϕ (mm) mini |
|-----------|----------------------|--|-----------------------------------|
| - | - | - | - |
| DFVBCR10 | 7 | 60 | 50 |
| DFVBCR13 | 14 | 80 | 60 |

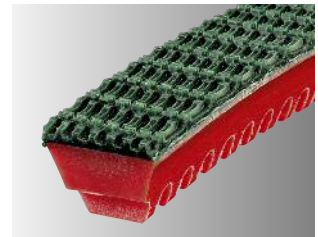


solid

| Reference | Traction force (daN) | Primitive pulley ϕ (mm) recommended | Primitive pulley ϕ (mm) mini |
|-----------|----------------------|--|-----------------------------------|
| DFVR10NA | 11 | 80 | 65 |
| DFVR13NA | 20 | 100 | 80 |
| DFVR17NA | 36 | 150 | 130 |
| DFVR22NA | 60 | 220 | 180 |
| DFVR32NA | 118 | 300 | 250 |

SUPERGRIP coating

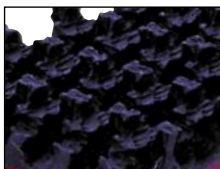
| Dimension (mm) | Pretension |
|----------------|------------|
| 10x6 Z | 5% |
| 13x8 A | 5% |
| 17x11 B | 5% |
| 22x14 C | 5% |
| 32x19 D | 5% |



cogged

| Reference | Traction force (daN) | Primitive pulley ϕ (mm) recommended | Primitive pulley ϕ (mm) mini |
|------------|----------------------|--|-----------------------------------|
| DFVRCR10NA | 7 | 60 | 50 |
| DFVRCR13NA | 14 | 80 | 60 |
| DFVRCR17NA | 25 | 110 | 90 |
| DFVRCR22NA | 42 | 150 | 120 |
| DFVRCR32NA | 82 | 220 | 180 |

other coatings *



RUBBER SUPERGRIP
(code NC)



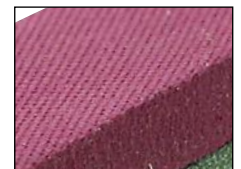
POLYESTER FELT
(code FP)



ARAMID FELT
(code FA)



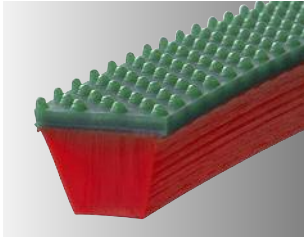
FOAM
(code MS)



LINATECH
(code LI)

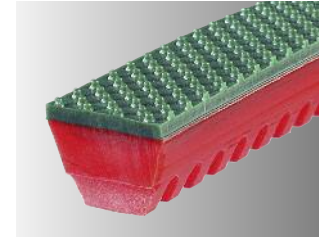


*Reference : complete the belt reference with the coating reference.



solid

SOUPLEX 85 ShA surface

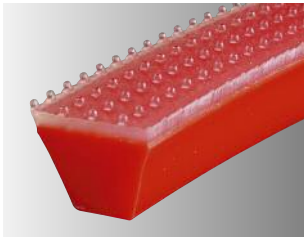


cogged

| Reference | Traction force (daN) | Primitive pulley ϕ (mm) recommended | mini |
|-----------|----------------------|--|------|
| DFVR10SPI | 15 | 90 | 80 |
| DFVR13SPI | 25 | 120 | 100 |
| DFVR17SPI | 43 | 170 | 150 |
| DFVR22SPI | 69 | 240 | 210 |
| DFVR32SPI | 132 | 340 | 260 |

| Dimension (mm) | Pretension |
|----------------|------------|
| 10x6 Z | 5% |
| 13x8 A | 5% |
| 17x11 B | 5% |
| 22x14 C | 5% |
| 32x19 D | 5% |

| Reference | Traction force (daN) | Primitive pulley ϕ (mm) recommended | mini |
|-------------|----------------------|--|------|
| DFVRCR10SPI | 11 | 80 | 70 |
| DFVRCR13SPI | 19 | 100 | 80 |
| DFVRCR17SPI | 32 | 130 | 110 |
| DFVRCR22SPI | 51 | 170 | 140 |
| DFVRCR32SPI | 96 | 240 | 200 |



solid

TOTALGRIP 70 ShA surface



cogged

| Reference | Traction force (daN) | Primitive pulley ϕ (mm) recommended | mini |
|-----------|----------------------|--|------|
| DFVR10TPI | 11 | 85 | 75 |
| DFVR13TPI | 20 | 110 | 90 |
| DFVR17TPI | 36 | 160 | 140 |
| DFVR22TPI | 60 | 230 | 200 |
| DFVR32TPI | 118 | 310 | 260 |

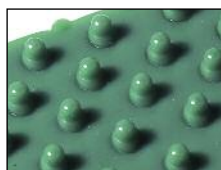
| Dimension (mm) | Pretension |
|----------------|------------|
| 10x6 Z | 5% |
| 13x8 A | 5% |
| 17x11 B | 5% |
| 22x14 C | 5% |
| 32x19 D | 5% |

| Reference | Traction force (daN) | Primitive pulley ϕ (mm) recommended | mini |
|-------------|----------------------|--|------|
| DFVRCR10TPI | 7 | 70 | 60 |
| DFVRCR13TPI | 14 | 90 | 75 |
| DFVRCR17TPI | 25 | 120 | 100 |
| DFVRCR22TPI | 42 | 160 | 130 |
| DFVRCR32TPI | 82 | 230 | 190 |

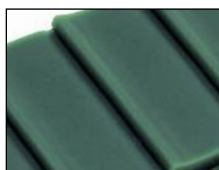
other surfaces *



SMOOTH



STUDED



SAW-TOOTH



SG3



TRELLIS

Reference

Souplex 85 ShA

Totalgrip 70 ShA

SLI

TLI

SPI

TPI

SUS

TUS

SSG

TSG

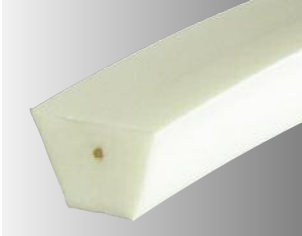
SLO

TLO

*Reference : complete the belt reference with the coating reference.

SOUPLEX reinforced V belts

| |
|--|
| Hardness 85 ShA |
| Pretension see table |
| Temperature range -20°C/+60°C |
| Friction coefficient HDPE : 0.35 Steel : 0.6 Stainless steel : 0.7 |
| Roll length 30 m |



solid



cogged

SOUPLEX white Aramid reinforced

| Reference | Traction force (daN) | Primitive pulley ϕ (mm) recommended | (mm) mini |
|-----------|----------------------|--|-----------|
| SXVWAR10 | 10 | 90 | 75 |
| SXVWAR13 | 25 | 100 | 80 |
| SXVWAR17 | 40 | 150 | 130 |
| SXVWAR22 | 60 | 220 | 200 |
| SXVWAR32 | 120 | 280 | 250 |

| Dimension (mm) | Pretension |
|----------------|------------|
| 10x6 Z | 0.5% |
| 13x8 A | 0.5% |
| 17x11 B | 1% |
| 22x14 C | 1.5% |
| 32x19 D | 1.5% |

| Reference | Traction force (daN) | Primitive pulley ϕ (mm) recommended | (mm) mini |
|-----------|----------------------|--|-----------|
| SXVWAC10 | 10 | 60 | 50 |
| SXVWAC13 | 25 | 80 | 60 |
| SXVWAC17 | 40 | 110 | 90 |
| SXVWAC22 | 60 | 160 | 130 |
| SXVWAC32 | 120 | 220 | 180 |



solid



cogged

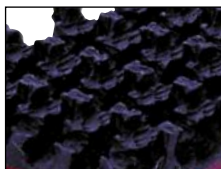
SUPERGRIP coating

| Reference | Traction force (daN) | Primitive pulley ϕ (mm) recommended | (mm) mini |
|------------|----------------------|--|-----------|
| SXVWAR10NA | 10 | 90 | 75 |
| SXVWAR13NA | 25 | 100 | 80 |
| SXVWAR17NA | 40 | 150 | 130 |
| SXVWAR22NA | 60 | 220 | 200 |
| SXVWAR32NA | 120 | 280 | 250 |

| Dimension (mm) | Pretension |
|----------------|------------|
| 10x6 Z | 0.5% |
| 13x8 A | 0.5% |
| 17x11 B | 1% |
| 22x14 C | 1.5% |
| 32x19 D | 1.5% |

| Reference | Traction force (daN) | Primitive pulley ϕ (mm) recommended | (mm) mini |
|------------|----------------------|--|-----------|
| SXVWAC10NA | 10 | 60 | 50 |
| SXVWAC13NA | 25 | 80 | 60 |
| SXVWAC17NA | 40 | 110 | 90 |
| SXVWAC22NA | 60 | 160 | 130 |
| SXVWAC32NA | 120 | 220 | 180 |

other coatings *



RUBBER SUPERGRIP
(code NC)



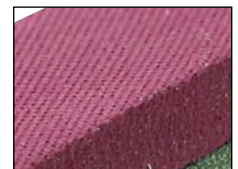
POLYESTER FELT
(code FP)



ARAMID FELT
(code FA)



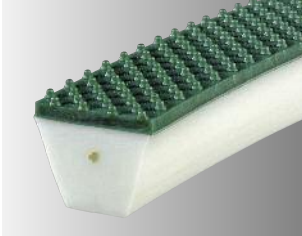
FOAM
(code MS)



LINATECH
(code LI)



*Reference : complete the belt reference with the coating reference.



solid

SOUPLEX 85 ShA surface



cogged

| Reference | Traction force (daN) | Primitive pulley ϕ (mm) recommended | Primitive pulley ϕ (mm) mini |
|-------------|----------------------|--|-----------------------------------|
| - | - | - | - |
| SXVWAR13SPI | 25 | 120 | 100 |
| SXVWAR17SPI | 40 | 170 | 150 |
| SXVWAR22SPI | 60 | 240 | 210 |
| SXVWAR32SPI | 120 | 330 | 280 |

| Dimension (mm) | Pretension |
|----------------|------------|
| 10x6 Z | 0.5% |
| 13x8 A | 0.5% |
| 17x11 B | 1% |
| 22x14 C | 1.5% |
| 32x19 D | 1.5% |

| Reference | Traction force (daN) | Primitive pulley ϕ (mm) recommended | Primitive pulley ϕ (mm) mini |
|-------------|----------------------|--|-----------------------------------|
| SXVWAC10SPI | 10 | 90 | 75 |
| SXVWAC13SPI | 25 | 100 | 80 |
| SXVWAC17SPI | 40 | 130 | 110 |
| SXVWAC22SPI | 60 | 180 | 150 |
| SXVWAC32SPI | 120 | 240 | 200 |



solid

TOTALGRIP 70 ShA surface



cogged

| Reference | Traction force (daN) | Primitive pulley ϕ (mm) recommended | Primitive pulley ϕ (mm) mini |
|-------------|----------------------|--|-----------------------------------|
| - | - | - | - |
| SXVWAR13TPI | 25 | 110 | 90 |
| SXVWAR17TPI | 40 | 160 | 140 |
| SXVWAR22TPI | 60 | 230 | 200 |
| SXVWAR32TPI | 120 | 300 | 250 |

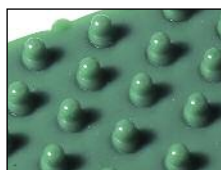
| Dimension (mm) | Pretension |
|----------------|------------|
| 10x6 Z | 0.5% |
| 13x8 A | 0.5% |
| 17x11 B | 1% |
| 22x14 C | 1.5% |
| 32x19 D | 1.5% |

| Reference | Traction force (daN) | Primitive pulley ϕ (mm) recommended | Primitive pulley ϕ (mm) mini |
|-------------|----------------------|--|-----------------------------------|
| SXVWAC10TPI | 10 | 80 | 70 |
| SXVWAC13TPI | 25 | 90 | 75 |
| SXVWAC17TPI | 40 | 120 | 100 |
| SXVWAC22TPI | 60 | 170 | 140 |
| SXVWAC32TPI | 120 | 230 | 190 |

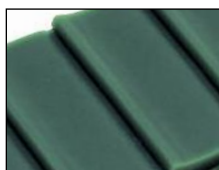
other surfaces *



SMOOTH



STUDED



SAW-TOOTH



SG3



TRELLIS

Reference

Souplex 85 ShA

SLI

SPI

SUS

SSG

SLO

Totalgrip 70 ShA

TLI

TPI

TUS

TSG

TLO

*Reference : complete the belt reference with the coating reference.

| |
|--|
| Hardness 85 ShA |
| Pretension 5 - 8% |
| Temperature range -20°C/+60°C |
| Friction coefficient HDPE : 0.35 Steel : 0.6 Stainless steel : 0.7 |
| Roll length 30 m |



solid

SOUPLEX brown

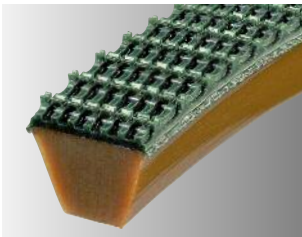


cogged

| Reference | Traction force (daN) | Primitive pulley ϕ (mm) recommended | Primitive pulley ϕ (mm) mini |
|-----------|----------------------|--|-----------------------------------|
| SXVM8 | 4 | 50 | 40 |
| SXVM10 | 6 | 70 | 55 |
| SXVM13 | 12 | 80 | 70 |
| SXVM17 | 22 | 130 | 110 |
| SXVM22 | 36 | 170 | 130 |
| SXVM32 | 71 | 250 | 220 |

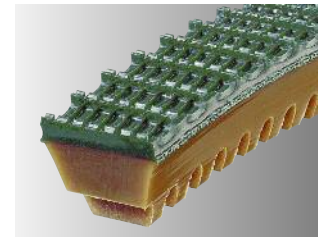
| Dimension (mm) | Pretension |
|----------------|------------|
| 8x5 | 8% |
| 10x6 Z | 8% |
| 13x8 A | 8% |
| 17x11 B | 8% |
| 22x14 C | 8% |
| 32x19 D | 8% |

| Reference | Traction force (daN) | Primitive pulley ϕ (mm) recommended | Primitive pulley ϕ (mm) mini |
|-----------|----------------------|--|-----------------------------------|
| - | - | - | - |
| SXVMCR10 | 4 | 50 | 40 |
| SXVMCR13 | 8 | 60 | 50 |
| SXVMCR17 | 15 | 90 | 70 |
| SXVMCR22 | 25 | 130 | 110 |
| SXVMCR32 | 50 | 180 | 150 |



solid

SUPERGRIP coating



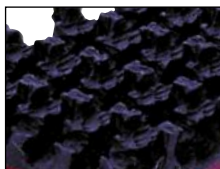
cogged

| Reference | Traction force (daN) | Primitive pulley ϕ (mm) recommended | Primitive pulley ϕ (mm) mini |
|-----------|----------------------|--|-----------------------------------|
| SXVM8NA | 4 | 50 | 40 |
| SXVM10NA | 6 | 70 | 55 |
| SXVM13NA | 12 | 80 | 70 |
| SXVM17NA | 22 | 130 | 110 |
| SXVM22NA | 36 | 170 | 130 |
| SXVM32NA | 71 | 250 | 220 |

| Dimension (mm) | Pretension |
|----------------|------------|
| 8x5 | 8% |
| 10x6 Z | 8% |
| 13x8 A | 8% |
| 17x11 B | 8% |
| 22x14 C | 8% |
| 32x19 D | 8% |

| Reference | Traction force (daN) | Primitive pulley ϕ (mm) recommended | Primitive pulley ϕ (mm) mini |
|------------|----------------------|--|-----------------------------------|
| - | - | - | - |
| SXVMCR10NA | 4 | 50 | 40 |
| SXVMCR13NA | 8 | 60 | 50 |
| SXVMCR17NA | 15 | 90 | 70 |
| SXVMCR22NA | 25 | 130 | 110 |
| SXVMCR32NA | 50 | 180 | 150 |

other coatings *



RUBBER SUPERGRIP
(code NC)



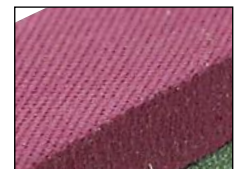
POLYESTER FELT
(code FP)



ARAMID FELT
(code FA)



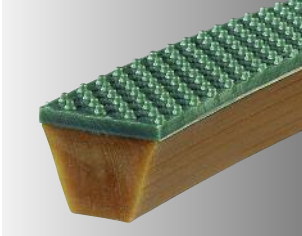
FOAM
(code MS)



LINATECH
(code LI)

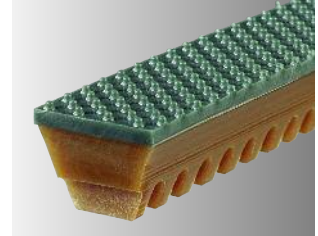


*Reference : complete the belt reference with the coating reference.



solid

SOUPLEX 85 ShA surface

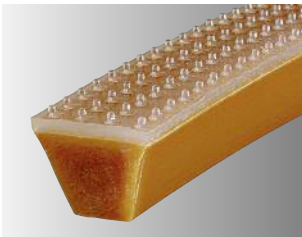


cogged

| Reference | Traction force (daN) | Primitive pulley ϕ (mm) recommended | Primitive pulley ϕ (mm) mini |
|-----------|----------------------|--|-----------------------------------|
| SXVM10SPI | 10 | 80 | 70 |
| SXVM13SPI | 17 | 100 | 90 |
| SXVM17SPI | 29 | 150 | 130 |
| SXVM22SPI | 45 | 190 | 150 |
| SXVM32SPI | 85 | 280 | 240 |

| Dimension (mm) | Pretension |
|----------------|------------|
| 10x6 Z | 8% |
| 13x8 A | 8% |
| 17x11 B | 8% |
| 22x14 C | 8% |
| 32x19 D | 8% |

| Reference | Traction force (daN) | Primitive pulley ϕ (mm) recommended | Primitive pulley ϕ (mm) mini |
|-------------|----------------------|--|-----------------------------------|
| SXVMCR10SPI | 8 | 70 | 60 |
| SXVMCR13SPI | 13 | 80 | 70 |
| SXVMCR17SPI | 22 | 110 | 90 |
| SXVMCR22SPI | 34 | 150 | 130 |
| SXVMCR32SPI | 64 | 200 | 170 |



solid

TOTALGRIP 70 ShA surface



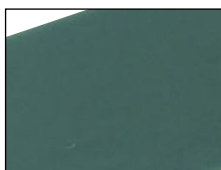
cogged

| Reference | Traction force (daN) | Primitive pulley ϕ (mm) recommended | Primitive pulley ϕ (mm) mini |
|-----------|----------------------|--|-----------------------------------|
| SXVM10TPI | 6 | 75 | 65 |
| SXVM13TPI | 12 | 90 | 80 |
| SXVM17TPI | 22 | 140 | 120 |
| SXVM22TPI | 36 | 180 | 140 |
| SXVM32TPI | 71 | 260 | 230 |

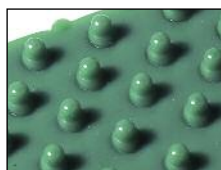
| Dimension (mm) | Pretension |
|----------------|------------|
| 10x6 Z | 8% |
| 13x8 A | 8% |
| 17x11 B | 8% |
| 22x14 C | 8% |
| 32x19 D | 8% |

| Reference | Traction force (daN) | Primitive pulley ϕ (mm) recommended | Primitive pulley ϕ (mm) mini |
|-------------|----------------------|--|-----------------------------------|
| SXVMCR10TPI | 4 | 60 | 50 |
| SXVMCR13TPI | 8 | 70 | 60 |
| SXVMCR17TPI | 15 | 100 | 80 |
| SXVMCR22TPI | 25 | 140 | 120 |
| SXVMCR32TPI | 50 | 190 | 160 |

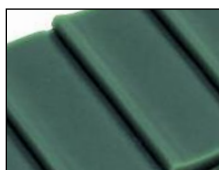
other surfaces *



SMOOTH



STUDED



SAW-TOOTH



SG3



TRELLIS

Reference

Souplex 85 ShA

Totalgrip 70 ShA

SLI

TLI

SPI

TPI

SUS

TUS

SSG

TSG

SLO

TLO

*Reference : complete the belt reference with the coating reference.