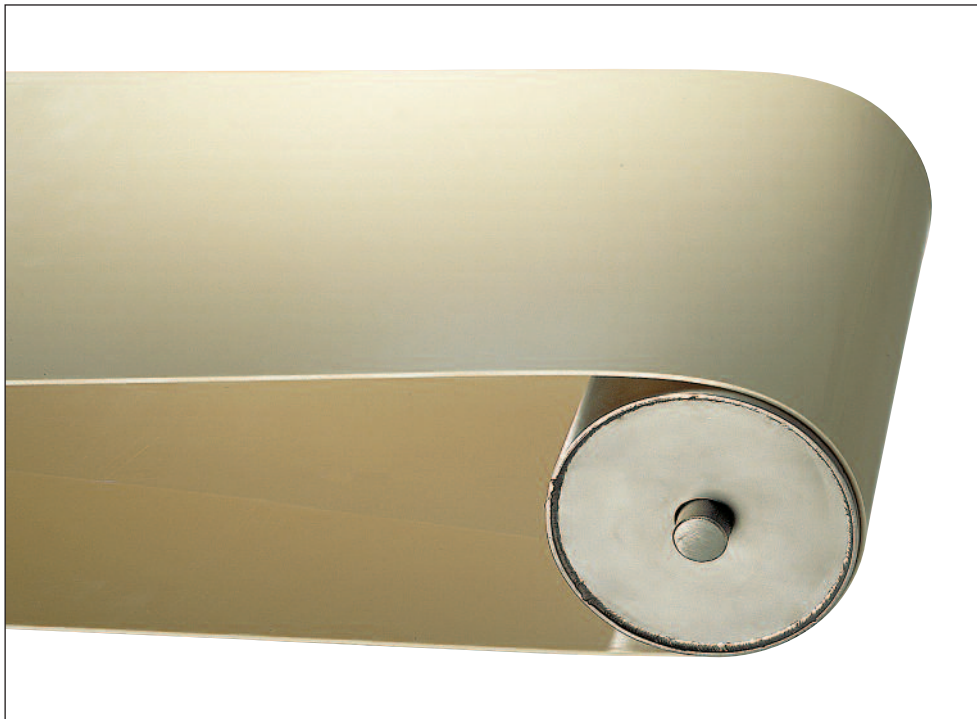


DEL/ROC ivory



Characteristics

- **Food quality.**
- Easy to clean.
- Resistance to abrasion.
- Resistance to chemicals.
- Excellent traction force.
- Good sliding on supports.

Applications

- Medium or heavy loads.
- Possible accumulation.
- Full-loaded start.
- Long spacings.

Compatible welding processes

- With welding iron and clamp.
- With hot air gun.
- With fasteners.

Guides, profiles, holes... on demand.



DEL/ROC ivory

Material	polyester elastomer
Colour	ivory
Bottom side	smooth
Top side	smooth
Hardness	100 ShA - 55 ShD
Traction rating	
at 0.5% of tension	9 daN/cm² of section
at 1% of tension	18 daN/cm² of section
at 1.5% of tension	27 daN/cm² of section
Installation tension	0.5 to 2% depending on conditions
Extreme temperatures	-30°C/+90°C
Friction coefficient on	
HDPE	0.15 - 0.2
Steel	0.35 - 0.4
Stainless steel	0.5



Reference					
Flat belt width < 100 mm	Conveyor belt width ≥ 100 mm	Belt thickness (mm)	Maximum width (mm)	Minimum drum ø (mm)	Weight (kg / m ²)
DRPI1.5	DRBI1.5	1.5	650	30	1.8
DRPI2	DRBI2	2	650	40	2.4
DRPI2.5	DRBI2.5	2.5	650	60	3
DRPI3	DRBI3	3	650	80	3.6
DRPI4	DRBI4	4	650	160	4.8
DRPI5	DRBI5	5	650	200	6

DEL/ROC belts with guide
minimum drum ø(mm)

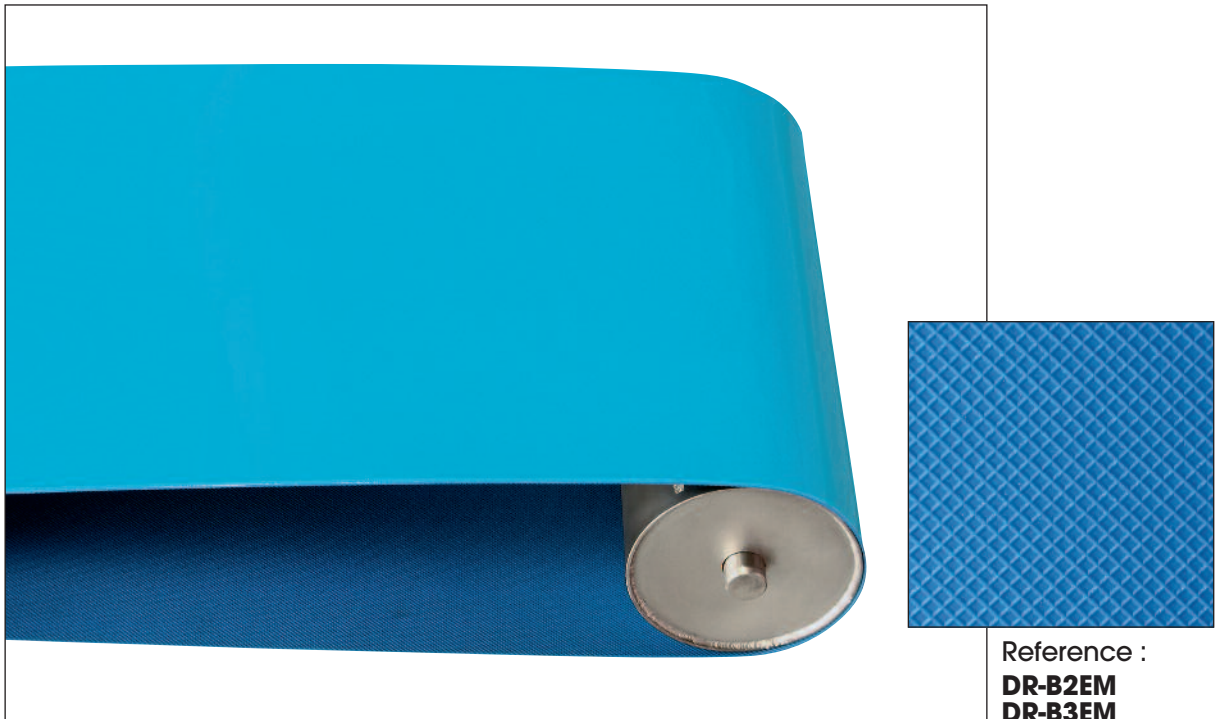


Belt thickness (mm)	DEL/ROC guide (100 ShA)					DEL/ROC cogged guide				
	8 x 5	10 x 6	13 x 8	17 x 11	22 x 14	8 x 5	10 x 6	13 x 8	17 x 11	22 x 14
2	-	180	220	-	-	-	140	180	-	-
2.5	-	190	240	280	-	-	160	190	230	-
3	-	210	260	310	400	-	180	200	270	330
4	-	240	280	360	420	-	200	220	310	350
5	-	270	310	420	480	-	230	260	370	410

Belt thickness (mm)	V/FLEX guide (PVC 60 ShA)					V/FLEX cogged guide				
	8 x 5	10 x 6	13 x 8	17 x 11	22 x 14	8 x 5	10 x 6	13 x 8	17 x 11	22 x 14
2	70	80	100	-	-	-	70	90	-	-
2.5	80	100	110	130	-	-	90	100	110	-
3	110	130	140	150	200	-	110	120	130	150
4	160	180	200	210	220	-	160	180	190	200
5	200	210	220	240	250	-	200	210	230	240



DEL/ROC blue



Characteristics

- **Food quality.**
- Easy to clean.
- Resistance to abrasion.
- Resistance to chemicals.
- Excellent traction rating.
- Good sliding on supports.

Applications

- Medium or heavy loads.
- Possible accumulation.
- Full-loaded start.
- Long spacings.

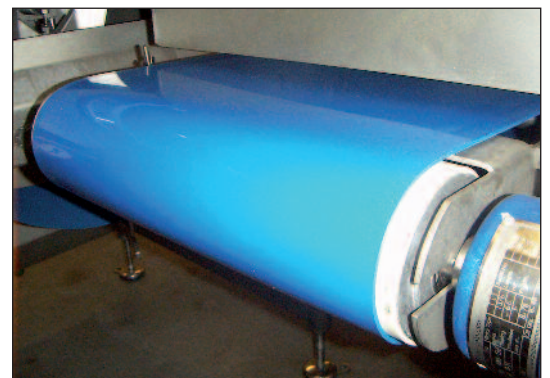
Compatible welding processes

- With welding iron and clamp.
- With hot air gun.
- With fasteners.

Guides, profiles, holes... on demand.

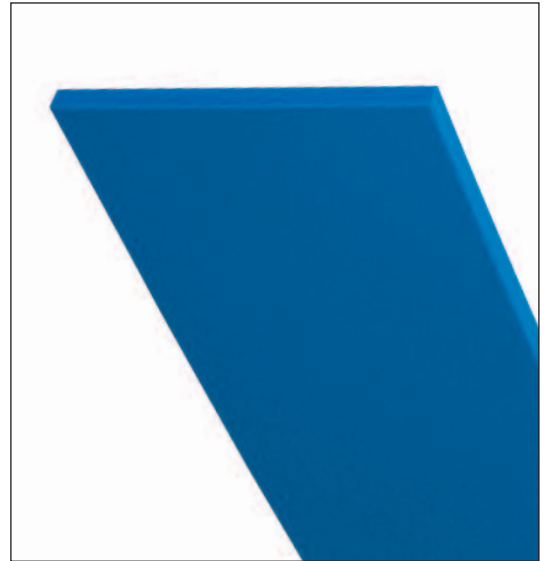
Smooth or **DIAMOND-EMBOSSED** bottom side

- Sliding improved on the belts' support in wet or fat conditions.
- Reduced traction efforts.



DEL/ROC blue

Material	polyester elastomer
Colour	blue
Bottom side	smooth or diamond-embossed
Top side	smooth
Hardness	100 ShA - 55 ShD
Traction rating	
at 0.5% of tension	9 daN/cm² of section
at 1% of tension	18 daN/cm² of section
at 1.5% of tension	27 daN/cm² of section
Installation tension	0.5 to 2% depending on conditions
Extreme temperatures	-30°C/+90°C
Friction coefficient on	
HDPE	0.15 - 0.2
Steel	0.35 - 0.4
Stainless steel	0.5



Reference					
Flat belt width < 100 mm	Conveyor belt width ≥ 100 mm	Belt thickness (mm)	Maximum width (mm)	Minimum drum ø (mm)	Weight (kg / m ²)
DRPB2	DRBB2	— 2	1000	40	2.4
DRPB3	DRBB3	— 3	1000	80	3.6

DEL/ROC belts with guide minimum drum ø(mm)



Belt thickness (mm)	DEL/ROC guide (100 ShA)					DEL/ROC cogged guide				
	8 x 5	10 x 6	13 x 8	17 x 11	22 x 14	8 x 5	10 x 6	13 x 8	17 x 11	22 x 14
— 2	-	180	220	-	-	-	140	180	-	-
— 3	-	210	260	310	400	-	180	200	270	330

Belt thickness (mm)	V/FLEX guide (PVC 60 ShA)					V/FLEX cogged guide				
	8 x 5	10 x 6	13 x 8	17 x 11	22 x 14	8 x 5	10 x 6	13 x 8	17 x 11	22 x 14
— 2	70	80	100	-	-	-	70	90	-	-
— 3	110	130	140	150	200	-	110	120	130	150



DEL/FLEX green



Characteristics

- **Standard quality.**
- Easy to clean.
- Resistance to abrasion.
- Resistance to cuttings.
- Resistance to tear.
- Resistance to chemicals.
- Flexible.



Applications

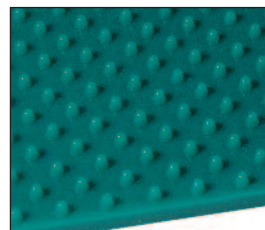
- Medium loads.
- Small drum Ø.
- Abrasive conditions.
- U-shape belts.

Compatible welding processes

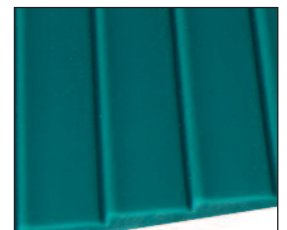
- With welding iron and clamp.
- With hot air gun.
- With heating press.
- With fasteners.

Guides, profiles, holes... on demand.

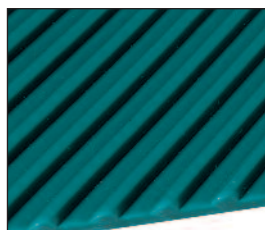
standard embossings



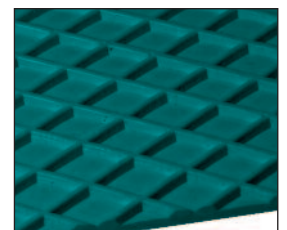
non-slip studded (PI)



sawtooth (US)



SG3 (SG)

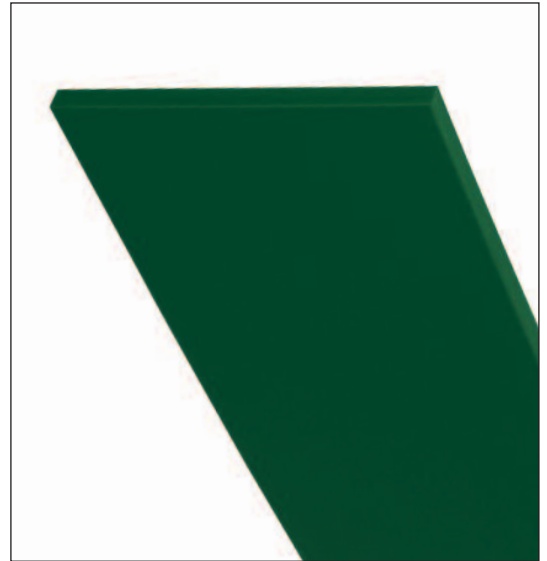


diamond (LO)

Maximum width: 380 mm.

DEL/FLEX green

Material	polyurethane
Colour	green
Bottom side	smooth
Top side	smooth
Hardness	93 ShA
Traction rating	
at 1% of tension	10 daN/cm² of section
at 2% of tension	15 daN/cm² of section
at 3% of tension	20 daN/cm² of section
Installation tension	2 to 4% depending on conditions
Extreme temperatures	-20°C/+70°C
Friction coefficient on	
HDPE	0.25
Steel	0.5
Stainless steel	0.6



Reference					
Flat belt width < 100 mm	Conveyor belt width ≥ 100 mm	Belt thickness (mm)	Maximum width (mm)	Minimum drum ø (mm)	Weight (kg / m ²)
DFPG1.5	DFBG1.5	1.5	650	20	1.8
DFPG2	DFBG2	2	650	30	2.5
DFPG3	DFBG3	3	650	70	3.75
DFPG4	DFBG4	4	650	100	5
DFPG5	DFBG5	5	650	140	6.25

DEL/ROC belts with guide minimum drum ø(mm)



Belt thickness (mm)	SOUPLEX guide (PU 85 ShA)					SOUPLEX cogged guide				
	8 x 5	10 x 6	13 x 8	17 x 11	22 x 14	8 x 5	10 x 6	13 x 8	17 x 11	22 x 14
2	90	100	140	-	-	-	70	80	-	-
3	110	130	180	220	280	-	85	100	140	200
4	130	170	220	260	350	-	100	120	160	220
5	160	200	250	300	400	-	140	150	180	240

Belt thickness (mm)	SUPERFLEX guide (PU 70 ShA)					SUPERFLEX cogged guide				
	8 x 5	10 x 6	13 x 8	17 x 11	22 x 14	8 x 5	10 x 6	13 x 8	17 x 11	22 x 14
2	60	65	90	135	-	-	55	65	90	-
3	80	85	100	150	-	-	70	80	110	-
4	100	100	115	165	-	-	100	100	120	-
5	140	140	140	185	-	-	140	140	150	-



SUPERFLEX 6 x 4 mm: consult us.

DEL/FLEX white



Characteristics

- **Food quality.**
- Easy to clean.
- Resistance to abrasion.
- Resistance to cuttings.
- Resistance to tear.
- Resistance to chemicals.
- Flexible.

Applications

- Medium loads.
- Small drum Ø.
- Abrasive conditions.
- U-shape belts.

Compatible welding processes

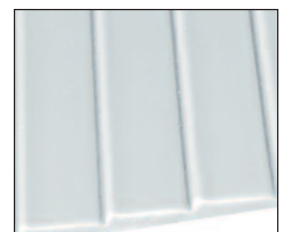
- With welding iron and clamp.
- With hot air gun.
- With heating press.
- With fasteners.

Guides, profiles, holes... on demand.

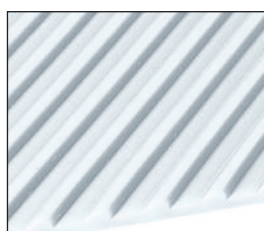
standard embossings



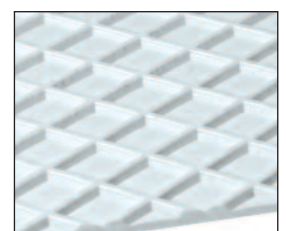
non-slip studded (PI)



sawtooth (US)



SG3 (SG)



diamond (LO)

Maximum width: 380 mm.

DEL/FLEX white

Material	polyurethane
Colour	white
Bottom side	smooth
Top side	smooth
Hardness	93 ShA
Traction rating	
at 1% of tension	10 daN/cm² of section
at 2% of tension	15 daN/cm² of section
at 3% of tension	20 daN/cm² of section
Installation tension	2 to 4% depending on conditions
Extreme temperatures	-20°C/+70°C
Friction coefficient on	
HDPE	0.25
Steel	0.5
Stainless steel	0.6



Reference					
Flat belt width < 100 mm	Conveyor belt width ≥ 100 mm	Belt thickness (mm)	Maximum width (mm)	Minimum drum ø (mm)	Weight (kg / m ²)
DFPW1.5	DFBW1.5	1.5	650	20	1.8
DFPW2	DFBW2	2	650	30	2.5
DFPW3	DFBW3	3	650	70	3.75
DFPW4	DFBW4	4	650	100	5



DEL/ROC belts with guide
minimum drum ø(mm)



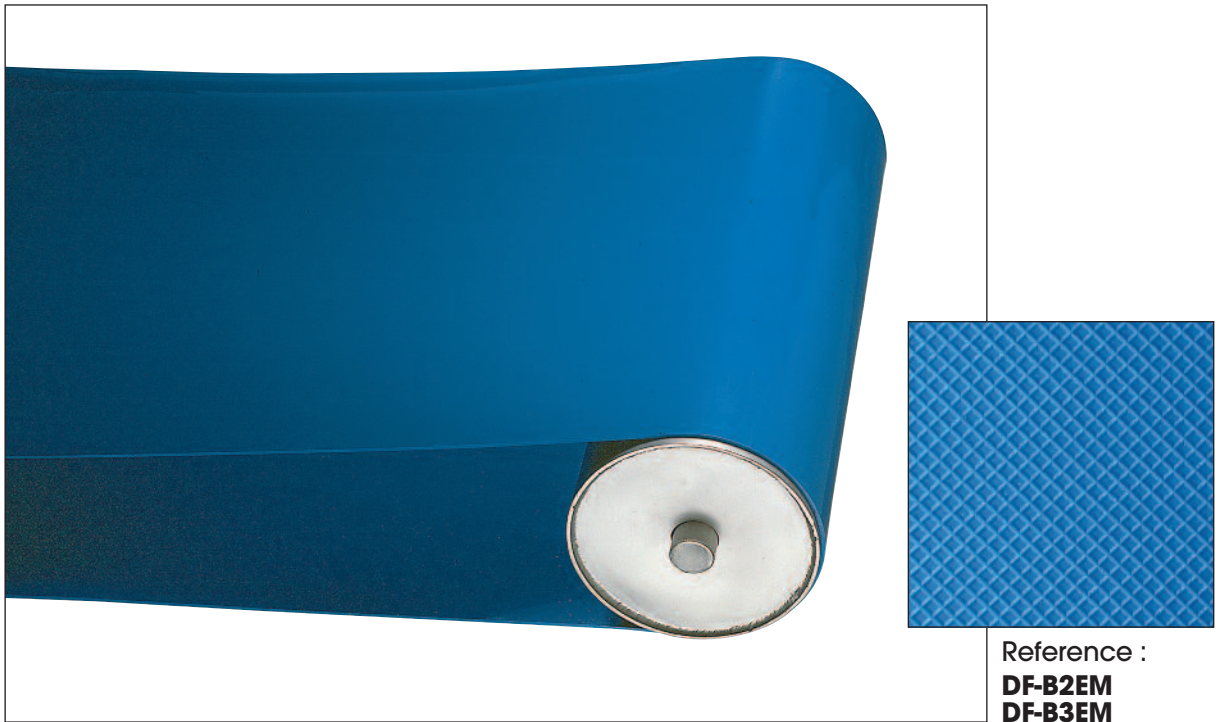
Belt thickness (mm)	SOUPLEX guide (PU 85 ShA)					SOUPLEX cogged guide				
	8 x 5	10 x 6	13 x 8	17 x 11	22 x 14	8 x 5	10 x 6	13 x 8	17 x 11	22 x 14
2	90	100	140	-	-	-	70	80	-	-
3	110	130	180	220	280	-	85	100	140	200
4	130	170	220	260	350	-	100	120	160	220

Belt thickness (mm)	SUPERFLEX guide (PU 70 ShA)					SUPERFLEX cogged guide				
	8 x 5	10 x 6	13 x 8	17 x 11	22 x 14	8 x 5	10 x 6	13 x 8	17 x 11	22 x 14
2	60	65	90	135	-	-	55	65	90	-
3	80	85	100	150	-	-	70	80	110	-
4	100	100	115	165	-	-	100	100	120	-



SUPERFLEX 6 x 4 mm: consult us.

DEL/FLEX blue



Characteristics

- **Food quality.**
- Easy to clean.
- Resistance to abrasion.
- Resistance to cuttings.
- Resistance to tear.
- Resistance to chemicals.
- Flexible.

Applications

- Medium loads.
- Small drum Ø.
- Abrasive conditions.
- U-shape belts.

Compatible welding processes

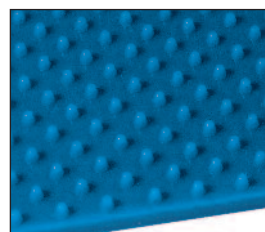
- With welding iron and clamp.
- With hot air gun.
- With heating press.
- With fasteners.

Guides, profiles, holes... on demand.

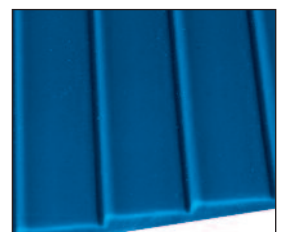
Smooth or DIAMOND-EMBOSSED bottom side

- Sliding improved on the belts' support in wet or fat conditions.
- Reduced traction efforts.

standard embossings



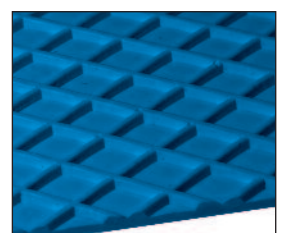
non-slip studded (PI)



sawtooth (US)



SG3 (SG)



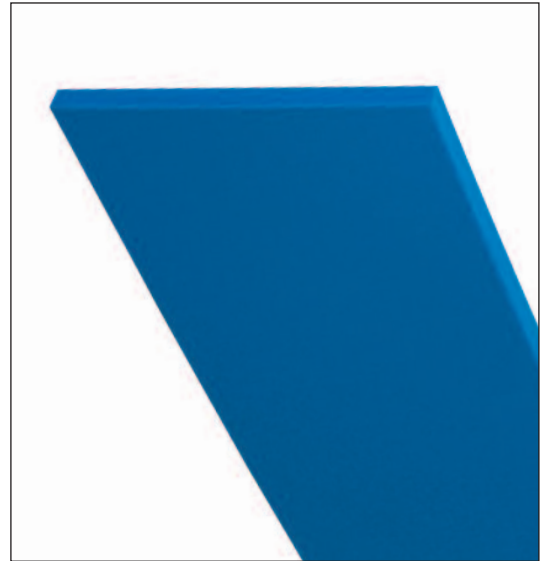
diamond (LO)



Maximum width: 380 mm.

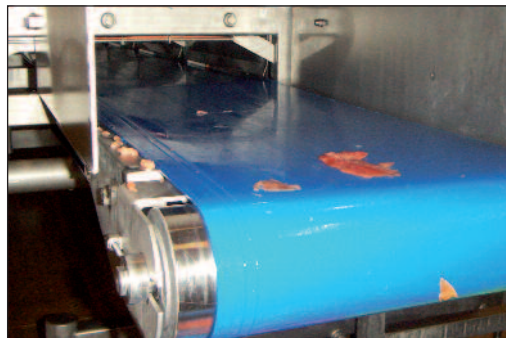


DEL/FLEX blue





Material	polyurethane
Colour	blue
Bottom side	smooth or diamond-embossed
Top side	smooth
Hardness	93 ShA
Traction rating	
at 1% of tension	10 daN/cm² of section
at 2% of tension	15 daN/cm² of section
at 3% of tension	20 daN/cm² of section
Installation tension	2 to 4% depending on conditions
Extreme temperatures	-20°C/+70°C
Friction coefficient on	
HDPE	0.25
Steel	0.5
Stainless steel	0.6







Reference					
Flat belt width < 100 mm	Conveyor belt width ≥ 100 mm	Belt thickness (mm)	Maximum width (mm)	Minimum drum ø (mm)	Weight (kg / m ²)
DFPB2	DFBB2	 2	1000	30	2.5
DFPB3	DFBB3	 3	1000	70	3.75



DEL/FLEX belts with guide
minimum drum ø(mm)

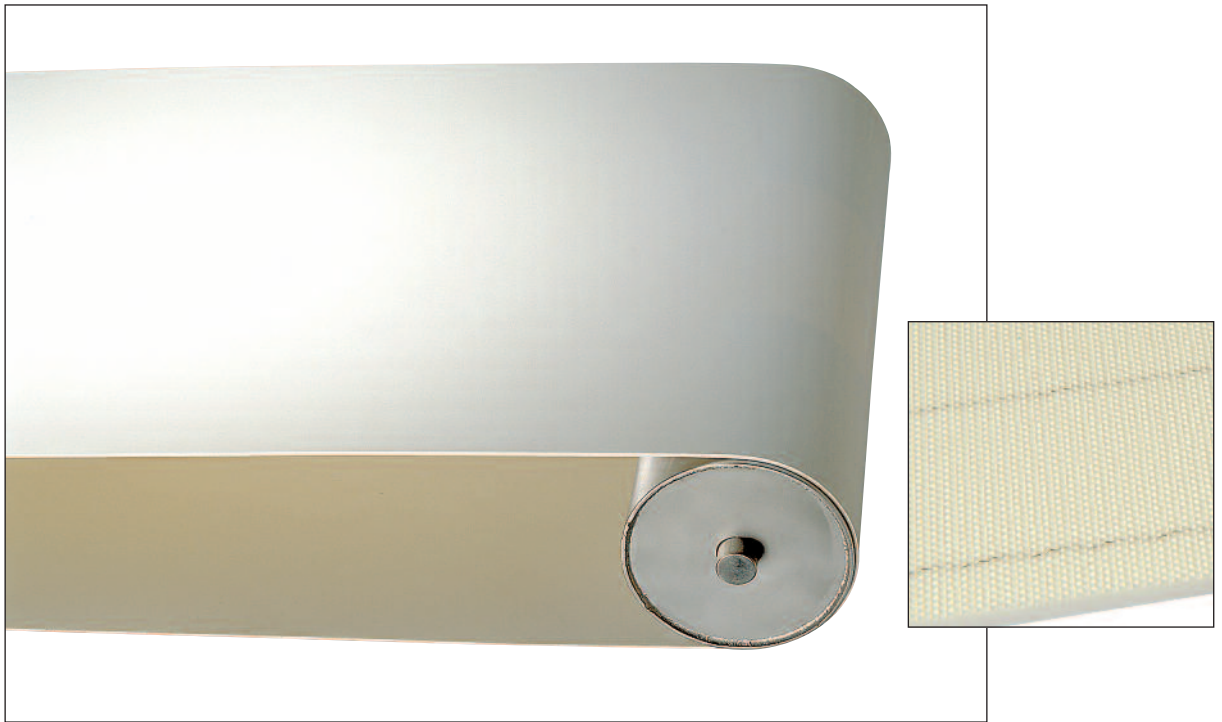
Belt thickness (mm)	 SOUPLEX guide (PU 85 ShA)					 SOUPLEX cogged guide				
	8 x 5	10 x 6	13 x 8	17 x 11	22 x 14	8 x 5	10 x 6	13 x 8	17 x 11	22 x 14
 2	90	100	140	-	-	-	70	80	-	-
 3	110	130	180	220	280	-	85	100	140	200

Belt thickness (mm)	 SUPERFLEX guide (PU 70 ShA)					 SUPERFLEX cogged guide				
	8 x 5	10 x 6	13 x 8	17 x 11	22 x 14	8 x 5	10 x 6	13 x 8	17 x 11	22 x 14
 2	60	65	90	135	-	-	55	65	90	-
 3	80	85	100	150	-	-	70	80	110	-



SUPERFLEX 6 x 4 mm: consult us.

DEL/FLEX white with reinforcement ply



Characteristics

- **Food quality.**
- Low stretch.
- Good sliding on belt's support.
- Resistance to abrasion.
- Resistance to cuttings.
- Resistance to tear.
- Excellent traction rating.
- Flexible.

Bottom side with REINFORCEMENT ply

Applications

- Medium or heavy loads.
- Long spacing.
- Short tensioning system.

Compatible welding processes

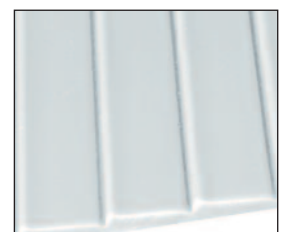
- With welding iron and clamp.
- With hot air gun.
- With heating press.
- With fasteners.

Guides, profiles, holes... on demand.

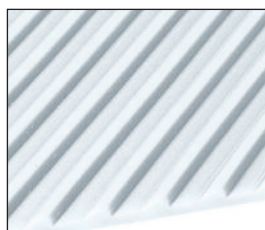
standard embossings



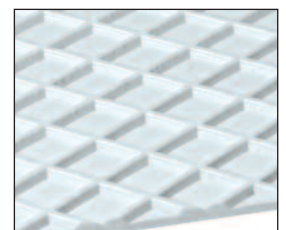
non-slip studded (PI)



sawtooth (US)



SG3 (SG)



diamond (LO)

Maximum width: 380 mm.

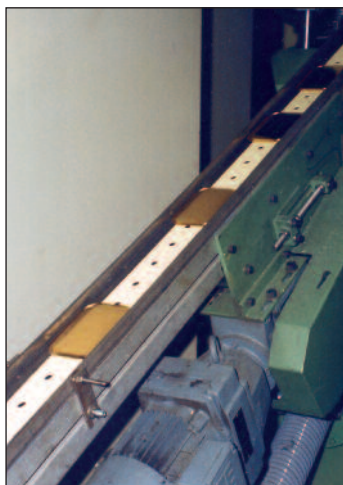


DEL/FLEX white with reinforcement ply

Material	polyurethane
Colour	white
Bottom side	polyester sheet
Top side	smooth
Hardness	93 ShA
Traction rating	
at 1% of tension	7 daN/cm of width
at 3% of tension	17,5 daN/cm of width
Installation tension	1 to 2% depending on conditions
Extreme temperatures	-20°C/+80°C
Friction coefficient on	
HDPE	0.25
Steel	0.35
Stainless steel	0.35



Reference		Belt thickness (mm)	Maximum width (mm)	Minimum drum ø (mm)	Weight (kg / m ²)
Flat belt width < 100 mm	Conveyor belt width ≥ 100 mm				
DFPW3RF	DFBW3RF	— 3	1000	80	3.6



DEL/FLEX belts with reinforcement ply and guide
minimum drum ø(mm)

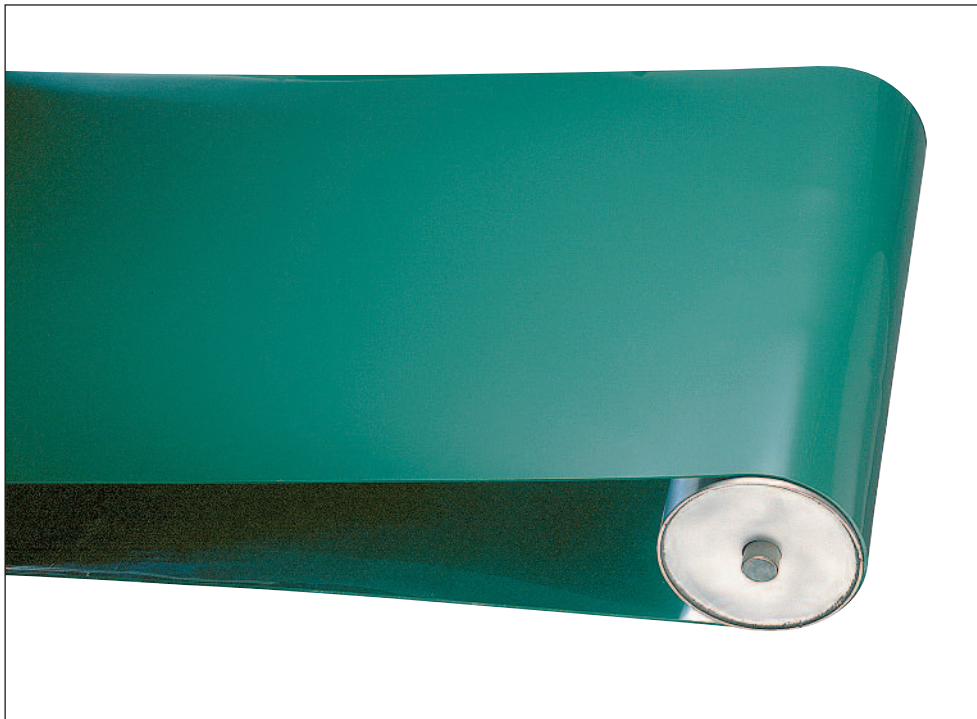


Belt thickness (mm)	SUPERFLEX guide (PU 70 ShA)					SUPERFLEX cogged guide				
	8 x 5	10 x 6	13 x 8	17 x 11	22 x 14	8 x 5	10 x 6	13 x 8	17 x 11	22 x 14
— 3	90	100	120	160	-	-	90	100	130	-

Belt thickness (mm)	V/FLEX guide (PVC 60 ShA)					V/FLEX cogged guide				
	8 x 5	10 x 6	13 x 8	17 x 11	22 x 14	8 x 5	10 x 6	13 x 8	17 x 11	22 x 14
— 3	80	90	100	120	200	-	80	80	100	-



SOUPLEX green



Characteristics

- **Standard quality.**
- Easy to clean.
- Resistance to abrasion.
- Resistance to cuttings.
- Resistance to tear.
- Resistance to chemicals.
- Grip.
- Very flexible.
- Stretchy.

Applications

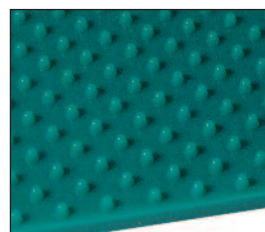
- Light load.
- Short spacing.
- Small drum Ø.

Compatible welding processes

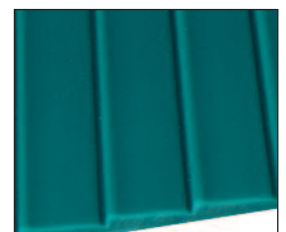
- With welding iron and clamp.
- With heating press.
- With fasteners.

Guides, profiles, holes... on demand.

standard embossings



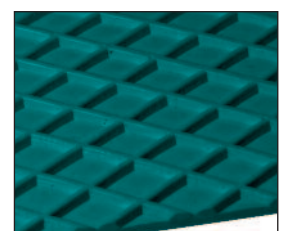
non-slip studded (PI)



sawtooth (US)



SG3 (SG)

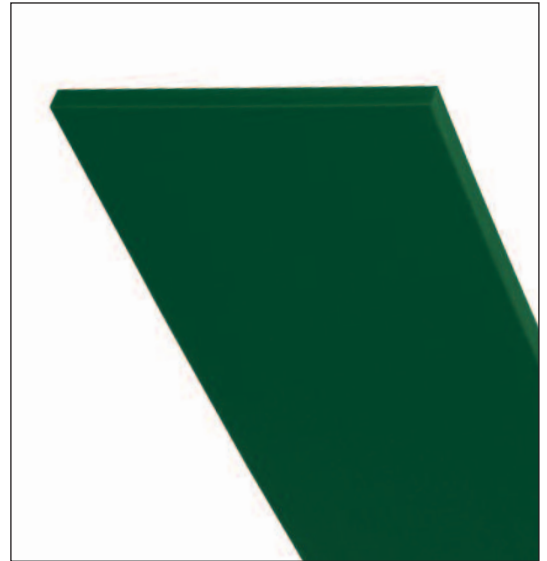





diamond (LO)

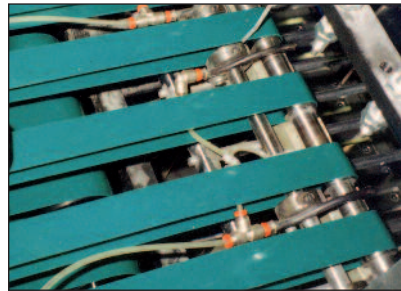
Maximum width: 380 mm.

SOUPLEX green

Material	polyurethane
Colour	green
Bottom side	smooth
Top side	smooth
Hardness	85 ShA
Traction rating	
at 2% of tension	4 daN/cm² of section
at 3% of tension	6 daN/cm² of section
at 4% of tension	8 daN/cm² of section
Installation tension	3 to 5% depending on conditions
Extreme temperatures	-20°C/+60°C
Friction coefficient on	
HDPE	0.35
Steel	0.6
Stainless steel	0.7













Reference					
Flat belt width < 100 mm	Conveyor belt width ≥ 100 mm	Belt thickness (mm)	Maximum width (mm)	Minimum drum ø (mm)	Weight (kg / m ²)
SXPG2	SXBG2	 2	650	20	2.5
SXPG3	SXBG3	 3	650	40	3.75
SXPG4	SXBG4	 4	650	60	5



SOUPLEX belts with guide
minimum drum ø(mm)



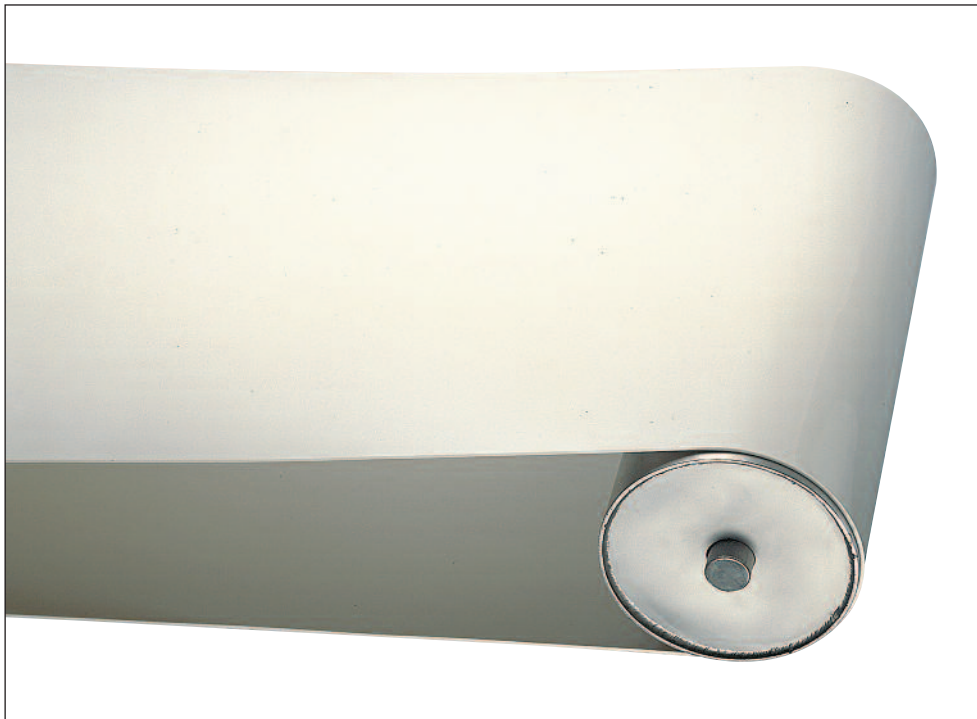
Belt thickness (mm)	 SOUPLEX guide (PU 85 ShA)					 SOUPLEX cogged guide				
	8 x 5	10 x 6	13 x 8	17 x 11	22 x 14	8 x 5	10 x 6	13 x 8	17 x 11	22 x 14
 2	80	90	130	-	-	-	55	65	-	-
 3	100	120	160	200	260	-	70	80	120	180
 4	120	140	190	220	280	-	85	100	140	200

Belt thickness (mm)	 SUPERFLEX guide (PU 70 ShA)					 SUPERFLEX cogged guide				
	8 x 5	10 x 6	13 x 8	17 x 11	22 x 14	8 x 5	10 x 6	13 x 8	17 x 11	22 x 14
 2	40	60	80	-	-	-	40	55	-	-
 3	60	75	90	140	-	-	50	65	85	-
 4	80	90	110	160	-	-	70	80	100	-



SUPERFLEX 6 x 4 mm: consult us.

SOUPLEX white



Characteristics

- **Food quality.**
- Easy to clean.
- Resistance to abrasion.
- Resistance to cuttings.
- Resistance to tear.
- Resistance to chemicals.
- Grip.
- Very flexible.
- Stretchy.

Applications

- Light load.
- Short spacing.
- Small drum Ø.

Compatible welding processes

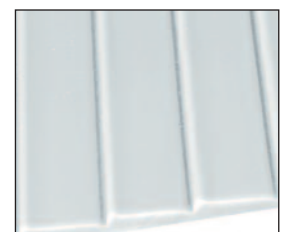
- With welding iron and clamp.
- With heating press.
- With fasteners.

Guides, profiles, holes... on demand.

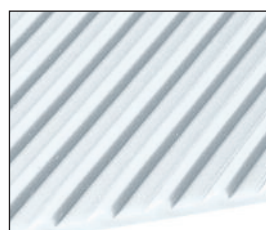
standard embossings



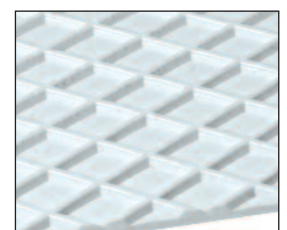
non-slip studded (PI)



sawtooth (US)



SG3 (SG)



diamond (LO)

Maximum width: 380 mm.

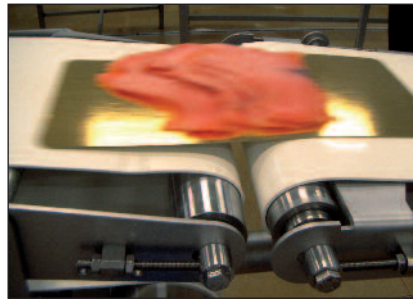


SOUPLEX white

Material	polyurethane
Colour	white
Bottom side	smooth
Top side	smooth
Hardness	85 ShA
Traction rating	
at 2% of tension	4 daN/cm² of section
at 3% of tension	6 daN/cm² of section
at 4% of tension	8 daN/cm² of section
Installation tension	3 to 5% depending on conditions
Extreme temperatures	-20°C/+60°C
Friction coefficient on	
HDPE	0.35
Steel	0.6
Stainless steel	0.7



Reference					
Flat belt width < 100 mm	Conveyor belt width ≥ 100 mm	Belt thickness (mm)	Maximum width (mm)	Minimum drum ø (mm)	Weight (kg / m ²)
SXPW2	SXBW2	2	650	20	2.5
SXPW3	SXBW3	3	650	40	3.75
SXPW4	SXBW4	4	650	60	5



SOUPLEX belts with guide
minimum drum ø(mm)



Belt thickness (mm)	SOUPLEX guide (PU 85 ShA)					SOUPLEX cogged guide				
	8 x 5	10 x 6	13 x 8	17 x 11	22 x 14	8 x 5	10 x 6	13 x 8	17 x 11	22 x 14
2	80	90	130	-	-	-	55	65	-	-
3	100	120	160	200	260	-	70	80	120	180
4	120	140	190	220	280	-	85	100	140	200

Belt thickness (mm)	SUPERFLEX guide (PU 70 ShA)					SUPERFLEX cogged guide				
	8 x 5	10 x 6	13 x 8	17 x 11	22 x 14	8 x 5	10 x 6	13 x 8	17 x 11	22 x 14
2	40	60	80	-	-	-	40	55	-	-
3	60	75	90	140	-	-	50	65	85	-
4	80	90	110	160	-	-	70	80	100	-



SUPERFLEX 6 x 4 mm: consult us.